

Source Water Protection Plan Franklin, Municipality Of

PWSID: WV3303602

County

August 2024

Prepared By:

Frank Wehrle
Business Manager

In cooperation with Franklin, Municipality Of
WV Bureau for Public Health, Source Water Assessment and Protection Program

This page is intentionally blank.

Frank Wehrle

Preparer's Name

Business Manager

Title of Preparer

Name of Contractor(s)/Consultant(s)

I Certify the information in the source water protection plan is complete and accurate to the best of my knowledge.

Responsible party of designee authorized to sign for water utility is on file:

Frank Wehrle

Name of Authorizing Signatory:

Business Manager

Title of Authorizing Signatory:

5/3/2024

Date of Submission (mm/dd/yyyy):

This page is intentionally blank.

TABLE OF CONTENTS

1.0 Purpose	1
1.1. What are the benefits of preparing a Source Water Protection Plan?	1
2.0 Background: WV Source Water Assessment and Protection Program	2
3.0 State Regulatory Requirements	3
4.0 System Information	4
5.0 Water Treatment and Storage	5
6.0 Delineations	7
7.0 Protection Team	9
8.0 Potential Sources of Significant Contamination	11
8.1. Confidentiality of PSSCs	11
8.2. Local and Regional PSSCs	11
8.3. Prioritization of Threats and Management Strategies	14
9.0 Implementation Plan for Management Strategies	15
10.0 Education and Outreach Strategies	19
11.0 Contingency Plan	27
11.1. Response Networks and Communication	27
11.2. Operation During Loss of Power	28
11.3. Future Water Supply Needs	29
11.4. Water Loss Calculation	29
11.5. Early Warning Monitoring System	30
12.0 Single Source Feasibility Study	33
13.0 Communication Plan	34
14.0 Emergency Response	35
15.0 Conclusion	36

LIST OF TABLES

Table 1. Population Served by FRANKLIN, MUNICIPALITY OF	4
Table 2. Franklin, Municipality Of Water Treatment Information	5
Table 3. Franklin, Municipality Of Surface Water Sources	6
Table 4. Franklin, Municipality Of Ground Water Sources	6
Table 5. Watershed Delineation Information	8
Table 6. Protection Team Member and Contact Information	10
Table 7. Locally Identified potential Sources of Significant Contamination	13
Table 8. Priority PSSCs or Critical Areas	16
Table 9. Priority PSSC Management Strategies	16
Table 10. Education and Outreach Implementation Plan	20
Table 11. Franklin, Municipality Of Water Shortage Response Capacity	28
Table 12. Generator Capacity	28
Table 13. Future Water Supply Needs for Franklin, Municipality Of	29
Table 14. Water Loss Information	30
Table 15. Early Warning Monitoring System Capabilities	31

APPENDICES

Appendix A. Figures and Tables
Appendix B. Early Warning Monitoring System Forms
Appendix C. Communication Plan Template
Appendix D. Single Source Feasibility
Appendix E. Supporting Documentation

SOURCE WATER PROGRAM ACRONYMS

AST	Aboveground Storage Tank
BMP	Best Management Practices
ERP	Emergency Response Plan
GWUDI	Ground Water Under the Direct Influence of Surface Water
LEPC	Local Emergency Planning Committee
OEHS	EED Office of Environmental Health Services/Environmental Engineering Division
PE	Professional Engineer
PSSCs	Potential Source of Significant Contamination
PWSU	Public Water System Utility
RAIN	River Alert Information Network
RPDC	Regional Planning and Development Council
SDWA	Safe Drinking Water Act
SWAP	Source Water Assessment and Protection
SWAPP	Source Water Assessment and Protection Program
SWP	Source Water Protection
SWPA	Source Water Protection Area
SWPP	Source Water Protection Plan
WARN	Water/Wastewater Agency Response Network
WHPA	Wellhead Protection Area
WHPP	Wellhead Protection Program
WSDA	Watershed Delineation Area
WVBPH	West Virginia Bureau for Public Health
WVDEP	West Virginia Department of Environmental Protection
WVDHHR	West Virginia Department of Health and Human Resources
WVDHSEM	West Virginia Division of Homeland Security and Emergency Management
ZCC	Zone of Critical Concern
ZPC	Zone of Peripheral Concern

1.0 PURPOSE

The goal of the West Virginia Bureau of Public Health (WVBPH) source water assessment and protection (SWAP) program is to prevent degradation of source waters which may preclude present and future uses of drinking water supplies to provide safe water in sufficient quantity to users. The most efficient way to accomplish this goal is to encourage and oversee source water protection on a local level. Many aspects of source water protection may be best addressed by engaging local stakeholders.

The intent of this document is to describe what Franklin, Municipality Of has done, is currently doing, and plans to do to protect its source of drinking water. Although this water system treats the water to meet federal and state drinking water standards, conventional treatment does not fully eradicate all potential contaminants and treatment that goes beyond conventional methods is often very expensive. By completing this plan, Franklin, Municipality Of acknowledges that implementing measures to minimize and mitigate contamination can be a relatively economical way to help ensure the safety of the drinking water.

1.1. WHAT ARE THE BENEFITS OF PREPARING A SOURCE WATER PROTECTION PLAN?

- Fulfilling the requirement for the public water utilities to complete or update their source water protection plan.
- Identifying and prioritizing potential threats to the source of drinking water; and establishing strategies to minimize the threats.
- Planning for emergency response to incidents that compromise the water supply by contamination or depletion, including how the public, state, and local agencies will be informed.
- Planning for future expansion and development, including establishing secondary sources of water.
- Ensuring conditions to provide the safest and highest quality drinking water to customers at the lowest possible cost.
- Providing more opportunities for funding to improve infrastructure, purchase land in the protection area, and other improvements to the intake or source water protection areas.

2.0 BACKGROUND: WV SOURCE WATER ASSESSMENT AND PROTECTION PROGRAM

Since 1974, the federal Safe Drinking Water Act (SDWA) has set minimum standards on the construction, operation, and quality of water provided by public water systems. In 1986, Congress amended the SDWA. A portion of those amendments were designed to protect the source water contribution areas around ground water supply wells. This program eventually became known as the Wellhead Protection Program (WHPP). The purpose of the WHPP is to prevent pollution of the source water supplying the wells.

The Safe Drinking Water Act Amendments of 1996 expanded the concept of wellhead protection to include surface water sources under the umbrella term of Source Water Protection. The amendments encourage states to establish SWAP programs to protect all public drinking water supplies. As part of this initiative states must explain how protection areas for each public water system will be delineated, how potential contaminant sources will be inventoried, and how susceptibility ratings will be established.

In 1999, the WVBPH published the West Virginia Source Water Assessment and Protection Program, which was endorsed by the United States Environmental Protection Agency. Over the next few years, WVBPH staff completed an assessment (i.e., delineation, inventory and susceptibility analysis) for all of West Virginia's public water systems. Each public water system was sent a copy of its assessment report. Information regarding assessment reports for Franklin, Municipality Of can be found in **Table 1**.

3.0 STATE REGULATORY REQUIREMENTS

On June 6, 2014, §16 1 2 and §16 1 9a of the Code of West Virginia, 1931, was reenacted and amended by adding three new sections, designated §16 1 9c, §16 1 9d and §16-1-9e. The changes to the code outlines specific requirements for public water utilities that draw water from a surface water source or a surface water influenced groundwater source.

Under the amended and new codes each existing public water utility using surface water or ground water influenced by surface water as a source must have completed or updated a source water protection plan by July 1, 2016, and must continue to update their plan every three years. Existing source water protection plans have been developed for many public water utilities in the past. If available, these plans were reviewed and considered in the development of this updated plan. Any new water system established after July 1, 2016 must submit a source water protection plan before they start to operate. A new plan is also required when there is a significant change in the potential sources of significant contamination (PSSC) within the zone of critical concern (ZCC).

The code also requires that public water utilities include details regarding PSSCs, protection measures, system capacities, contingency plans, and communication plans. Before a plan can be approved, the local health department and public will be invited to contribute information for consideration. In some instances, public water utilities may be asked to conduct independent studies of the source water protection area and specific threats to gain additional information.

4.0 SYSTEM INFORMATION

FRANKLIN, MUNICIPALITY OF is classified as a state regulated public utility and operates a community public water system. A community public water system is a system that regularly supplies drinking water from its own sources to at least 15 service connections used by year round residents of the area or regularly serves 25 or more people throughout the entire year. For purposes of this source water protection plan, community public water systems are also referred to as public water utilities. Information on the population served by this utility is presented in **Table 1** below.

Table 1. Population Served by FRANKLIN, MUNICIPALITY OF

Administrative office location:		305 N. High Street, Franklin, PENDLETON, WV, 26807	
Is the system a public utility, according to the Public Service Commission rule?		Yes	
Date of Most Recent Source Water Assessment Report:		7/1/2004	
Date of Most Recent Source Water Protection Plan:		7/1/2019	
Population served directly:		1402	
Bulk Water Purchaser Systems:	System Name	PWSID Number	Population
	Pendleton Co PSD US220 N	WV3303608	125
Total Population Served by the Utility:		1402	
Does utility have multiple Source Water Protection Areas(SWPAs)?		Yes	
How many SWPAs does the utility have?		2	

5.0 WATER TREATMENT AND STORAGE

As required, Franklin, Municipality Of has assessed their system (e.g., treatment capacity, storage capacity, unaccounted for water, contingency plans) to evaluate their ability to provide drinking water and protect public health. **Table 2** contains information on the water treatment methods and capacity of the utility. Information about the surface sources from which Franklin, Municipality Of draws water can be found in **Table 3**. If the utility draws water from any groundwater sources to blend with the surface water the information about these ground water sources can be found in **Table 4**.

Table 2. Franklin, Municipality Of Water Treatment Information

Default Facility	
Water treatment processes (in order of occurrence) includes:	COAGULATION, FLOCCULATION, SEDIMENTATION, FILTRATION, DISINFECTION
The treatment capacity is approximately (GPD):	500,000
Current average production is approximately (GPD):	246,941
Maximum gallons of water treated and produced at that plant in one day during the past year was:	455,000
Minimum gallons of water treated and produced at that plant in one day during the past year was:	48,000
Plant is operated an average of hours a day:	12
Maximum number of hours of operation in one day at that plant during the past year was:	20
Minimum number of hours of operation in one day at that plant during the past year was:	3
How many storage tank(s) are maintained on systems distribution system:	5
Total gallons of treated water storage:	793,000
Total gallons of raw water storage (GALs):	105,000

Table 3. Franklin, Municipality Of Surface Water Sources

Intake Name	Facility #	Local Name	Describe Intake	State Id Code	Date Constructed / Modified	Frequency of Use (Primary / Backup / Emergency)	Activity Status (Active/Inactive)
TOWN SPRING	3487425	Spring 1	Town Spring	SP001	3/1/1964	Permanent	Active
THORN CREEK	3493363		THORN CREEK	IN001	7/1/2021	Other	Inactive

Table 4. Franklin, Municipality Of Ground Water Sources

Well/Spring Name	Facility #	Local Name	Date Constructed / Modified	Completion Report Available (Yes/No)	Well Depth (ft)	Casting Depth (ft)	Grout (Yes/No)	Frequency of Use (Primary / Backup / Emergency)	Activity Status (Active/Inactive)
------------------	------------	------------	-----------------------------	--------------------------------------	-----------------	--------------------	----------------	---	-----------------------------------

6.0 DELINEATIONS

For surface water systems, delineation is the process used to identify and map the drainage basin that supplies water to a surface water intake. This area is generally referred to as the source water protection area (SWPA). All surface waters are susceptible to contamination because they are exposed at the surface and lack a protective barrier from contamination. Accidental spills, releases, sudden precipitation events that result in overland runoff, or storm sewer discharges can allow pollutants to readily enter the source water and potentially contaminate the drinking water at the intake. The SWPA for surface water is distinguished as a Watershed Delineation Area (WSDA) for planning purposes; and the Zone of Peripheral Concern (ZPC) and Zone of Critical Concern (ZCC) are defined for regulatory purposes.

The WSDA includes the entire watershed area upstream of the intake to the boundary of the State of West Virginia border, or a topographic boundary. The ZCC for a public surface water supply is a corridor along streams within the watershed that warrant more detailed scrutiny due to its proximity to the surface water intake and the intake's susceptibility to potential contaminants within that corridor. The ZCC is determined using a mathematical model that accounts for stream flows, gradient and area topography. The length of the ZCC is based on a five-hour time-of-travel of water in the streams to the water intake, plus an additional one-quarter mile below the water intake. The width of the zone of critical concern is 1,000 feet measured horizontally from each bank of the principal stream, and five hundred feet measured horizontally from each bank of the tributaries draining into the principal stream. Ohio River ZCC delineations are based on ORSANCO guidance and extend 25 miles above the intake. The Ohio River ZCC delineations include 1,320 feet (1/4 mile) measured from the bank of the main stem of the Ohio River and 500 feet on a tributary.

The ZPC for a public surface water supply source and for a public surface water influenced groundwater supply source is a corridor along streams within a watershed that warrants scrutiny due to its proximity to the surface water intake and the intake's susceptibility to potential contaminants within that corridor. The ZPC is determined using a mathematical model that accounts for stream flows, gradient and area topography. The length of the zone of peripheral concern is based on an additional five-hour time-of-travel of water in the streams beyond the perimeter of the zone of critical concern, which creates a protection zone of ten hours above the water intake. The width of the zone of peripheral concern is one thousand feet measured horizontally from each bank of the principal stream and five hundred feet measured horizontally from each bank of the tributaries draining into the principal stream.

For groundwater supplies there are two types of SWPA delineations: 1) wellhead delineations and 2) conjunctive delineations, which are developed for supplies identified as groundwater under the direct influence of surface water, or GWUDIs. A wellhead protection area is determined to be the area contributing to the recharge of the groundwater source (well or spring), within a five year time of travel. A conjunctive delineation combines a wellhead protection area for the hydrogeologic recharge and a connected surface area contributing to the wellhead.

Information and maps of the WSDA, ZCC, ZPC and Wellhead Protection Area for this public water supply were provided to the utility and are attached to this report. See **Appendix A. Figures**. Other information about the WSDA is shown in **Table 5**.

Table 5. Watershed Delineation Information

Intake Name	Town Spring
Size of WSDA (Square Miles)	4
River Watershed Name (8-digit HUC)	South Branch Potomac - 02070001
Size of Zone of Critical Concern (Acres)	0
Size of Zone of Peripheral Concern (Acres) (Include ZCC area)	0
Do you blend with ground water	No
Do you have an intake or well/spring missing from the list?	No
Intake Name	THORN CREEK
Size of WSDA (Square Miles)	51
River Watershed Name (8-digit HUC)	South Branch Potomac - 02070001
Size of Zone of Critical Concern (Acres)	9138
Size of Zone of Peripheral Concern (Acres) (Include ZCC area)	4697
Do you blend with ground water	No
Do you have an intake or well/spring missing from the list?	No

7.0 PROTECTION TEAM

One important step in preparing a source water protection plan is to organize a source water protection team who will help develop and implement the plan. The legislative rule requires that water utilities make every effort to inform and engage the public, local government, local emergency planners, the local health department and affected residents at all levels of the development of the protection plan. WVBPH recommends that the water utility invite representatives from these organizations to join the protection team, which will ensure that they are given an opportunity to contribute in all aspects of source water protection plan development. Public water utilities should document their efforts to engage representatives and provide an explanation if any local stakeholder is unable to participate. In addition, other local stakeholders may be invited to participate on the team or contribute information to be considered. These individuals may be emergency response personnel, local decision makers, business and industry representatives, land owners (of land in the protection area), and additional concerned citizens.

The administrative contact for Franklin, Municipality Of is responsible for assembling the protection team and ensuring that members are provided the opportunity to contribute to the development of the plan. The acting members of the Protection Team are listed in **Table 6**.

The role of the protection team members will be to contribute information to the development of the source water protection plan, review draft plans and make recommendations to ensure accuracy and completeness, and when possible contribute to implementation and maintenance of the protection plan. The protection team members are chosen as trusted representatives of the community served by the water utility and may be designated to access confidential data that contains details about the local PSSCs. The input of the protection team will be carefully considered by the water utility when making final decisions relative to the documentation and implementation of the source water protection plan.

Franklin, Municipality Of will be responsible for updating the source water protection plan and rely upon input from the protection team and the public to better inform their decisions. To find out how you can become involved as a participant or contributor, visit the utility website or call the utility phone number, which are provided in **Table 6**.

Table 6. Protection Team Member and Contact Information

Name	Representing	Title	Phone Number	Email
Frank Wehrle	Franklin, Municipality Of	Business Manager	(304)358-7525	townfranklin@gmail.com
William Waggy	Franklin, Municipality Of	Water Operator	(304)358-2984	townfranklin@gmail.com
	Franklin, Municipality Of			
	Franklin, Municipality Of			
Bruce Minor	Franklin, Municipality Of	Pendleton Co Office of Emergency Management	(304)358-3889	tact12000@yahoo.com
	Franklin, Municipality Of			
Jasper Mallow	Town of Franklin	Operator	(304)358-2984	townfranklin@gmail.com
Justin Jordan	WV BPH	Technical Analyst	(304)641-6132	justin.e.jordan@wv.gov
Date of First Protection Team Meeting:		Protection Team Meeting was held Thursday, May 2, 2024 at Franklin, Municipality Of. Meeting minutes attached in Appendix E.		
Efforts made to inform and engage local stakeholders (public, local government, local emergency planners, local health department, and affected residents) and explain absence of recommended stakeholders		Town employees and Emergency Management contact – contacted directly. Public meeting was advertised and held on May 2 2024 at 1:00pm. No public attended. Agenda, attendees list and minutes are attached to the SWPP.		

8.0 POTENTIAL SOURCES OF SIGNIFICANT CONTAMINATION

Source water protection plans should provide a complete and comprehensive list of the PSSCs contained within the ZCC, based upon information obtained from the WVBPH, working in cooperation with the West Virginia Department of Environmental Protection (WVDEP) and the West Virginia Division of Homeland Security and Emergency Management (WVDHSEM). A facility or activity is listed as a PSSC if it has the potential to release a contaminant that could potentially impact a nearby public water supply, and it does not necessarily indicate that any release has occurred.

The list of PSSCs located in the SWPA is organized into two types: 1) SWAP PSSCs, and 2) Regulated Data. SWAP PSSCs are those that have been collected and verified by the WVBPH SWAP program during previous field investigations to form source water assessment reports and source water protection plans. Regulated PSSCs are derived from federal and state regulated databases, and may include data from WVDEP, US Environmental Protection Agency, WVDHSEM, and from state data sources.

8.1. CONFIDENTIALITY OF PSSCS

A list of the PSSCs contained within the ZCC should be included in the source water protection plan. In the event of a chemical spill, release or other related emergency, information pertaining to the contaminant shall be immediately disseminated to any emergency responders reporting to the site. The designees for Franklin, Municipality Of are identified in the communication planning section of the source water protection plan.

PSSC data from some agencies (ex. WVDHSEM, WVDEP, etc.) may be restricted due to the sensitive nature of the data. Locational data will be provided to the public water utility. However, to obtain specific details regarding contaminants, (such as information included in Tier II reports), water utilities should contact the local emergency planning commission (LEPC) or agencies, directly. While the maps and lists of the PSSCs and regulated sites are to be maintained in a confidential manner, these data are provided in **Appendix A. Figures** for internal review and planning uses only.

8.2. LOCAL AND REGIONAL PSSCS

For the purposes of this source water protection plan, local PSSCs are those that are identified by local stakeholders in addition to the PSSCs lists distributed by the WVBPH and other agencies. Local stakeholders may identify local PSSCs for two main reasons. The first is that it is possible that threats exist from unregulated sources and land uses that have not already been inventoried and do not appear in regulated databases. For this reason each public water utility should investigate their protection area for local PSSCs. A PSSC inventory should identify all contaminant sources and land uses in the delineated ZCC. The second reason local PSSCs are identified is because public water utilities may consider expanding the PSSC inventory effort outside of the ZCC into the ZPC and WSDA if necessary to properly identify all threats that could impact the drinking water source. As the utility considers threats in the watershed they may consider collaborating with upstream communities to identify and manage regional PSSCs.

When conducting local and regional PSSC inventories, utilities should consider that some sources may be obvious like above ground storage tanks, landfills, livestock confinement areas, highway or railroad right of ways, and sewage treatment facilities. Others are harder to locate like abandoned cesspools, underground tanks, French

drains, dry wells, or old dumps and mines.

The Franklin, Municipality Of reviewed intake locations and the delineated SWPAs to verify the existence of PSSCs provided by the WVBPH and identify new PSSCs. If possible, locations of regulated sites within the SWPA were confirmed. Information on any new or updated PSSCs identified by Franklin, Municipality Of and not already appearing in datasets from the WVBPH can be found in **.Table 7**.

Table 7. Locally Identified potential Sources of Significant Contamination

Please see Appendix A to view this information.

8.3. PRIORITIZATION OF THREATS AND MANAGEMENT STRATEGIES

Once the utility has identified local concerns, they must develop a management plan that identifies specific activities that will be pursued by the public water utility in cooperation and concert with the WVBPH, local health departments, local emergency responders, LEPC and other agencies and organizations to protect the source water from contamination threats.

Depending on the number identified, it may not be feasible to develop management strategies for all of the PSSCs in the SWPA. The identified PSSCs can be prioritized by potential threat to water quality, proximity to the intake(s), and local concern. The highest priority PSSCs can be addressed first in the initial management plan. Lower ranked PSSCs can be addressed in the future as time and resources allow. To assess the threat to the source water, water systems should consider confidential information about each PSSC. This information may be obtained from state or local emergency planning agencies, Tier II reports, facility owner, facility groundwater protection plans, spill prevention response plans, results of field investigations, etc.

In addition to identifying and prioritizing PSSCs within the SWPA, local source water concerns may also focus on critical areas. For the purposes of this source water protection plan, a critical area is defined as an area that is identified by local stakeholders and can lie within or outside of the ZCC. Critical areas may contain one or more PSSCs which would require immediate response to address a potential incident that could impact the source water.

A list of these priority PSSCs was selected and ranked by the Franklin, Municipality Of Protection Team. This list reflects the concerns of this specific utility and may contain PSSCs not previously identified and not within the ZCC or ZPC. **Table 8** contains a description of why each critical area or PSSC is considered a threat and what management strategies the utility is either currently using or could use in the future to address each threat.

9.0 IMPLEMENTATION PLAN FOR MANAGEMENT STRATEGIES

Franklin, Municipality Of reviewed the recommended strategies listed in their previous source water protection plan, to consider if any of them should be adopted and incorporated in this updated plan. **Table 9** provides a brief statement summarizing the status of the recommended strategies. **Table 9** also lists strategies from a previous plan that are being incorporated in this plan update.

When considering source management strategies and education and outreach strategies, this utility has considered how and when the strategies will be implemented. The initial step in implementation is to establish responsible parties and timelines to implement the strategies. The water utility, working in conjunction with the Protection Team members, can determine the best process for completing activities within the projected time periods. Additional meetings may be needed during the initial effort to complete activities, after which the Protection Team should consider meeting annually to review and update the Source Water Protection Plan. A system of regular updates should be included in every implementation plan.

Proposed commitments and schedules may change but should be well documented and reported to the local stakeholders. If possible, utilities should include cost estimates for strategies to better plan for implementation and possible funding opportunities. Franklin, Municipality Of has developed an implementation plan for priority concerns listed in **Table 8**. The responsible team member, timeline, and potential cost of each strategy are presented in **Table 9**. Note: Because timelines may change, future plan updates should describe the status of each strategy and explain the lack of progress.

Table 8. Priority PSSCs or Critical Areas

PSSC or Critical Area	Priority Number	Reason for Concern
Agricultural Landuses	1	Pesticides and other chemicals used for farm operations can migrate into the water supply. Areas used for disposal of animal waste or burying dead livestock can also cause contamination of the source water. Increased nutrient load from these sources in surface water may result in algal growth. Algal presence may result in taste and odor issues. If stressed some algae also releases toxic chemicals that could cause a threat to human health.
Highway Traffic and Maintenance	2	Thorn Creek Road and Dry Run Road parallel streams draining to primary and backup intakes. Trucks supplying poultry farms commonly use these roads. If an accident were to occur, spilled materials could potentially contaminate the source water.
Septic Tanks and Sewer Systems	3	There are residential septic systems in the protection watershed. Failing septic systems can leach into surrounding soils or run off into surface water. Untreated runoff can increase bacterial concentrations in source water, especially when the river is at low flow conditions. Under normal operating conditions on-site sewage treatment systems would not be expected to contaminate source water. However, failing septic systems may allow untreated sewage to contaminate the surface water source. Untreated sewage contains total coliform, particularly E. coli, along with other bacteria and parasites that could negatively impact human health if treatment processes are not adjusted to address the contamination.
Fish Kills and Deformities	4	Fish kills and intersex fish have been observed in areas of the Potomac and Shenandoah River watersheds. Many theories exist to explain the fish kills and intersex fish all relating to excess nutrients and contaminants in the watershed, such as poultry and livestock waste, commercial fertilizers, and pharmaceuticals and personal care products discharged through septic and waste water treatment plants. The United States Geological Survey (USGS) has conducted several studies to try to determine the potential cause.

Table 9. Priority PSSC Management Strategies

PSSC or Critical Area	Management Activity	Responsible Protection Team Member	Status / Schedule	Comments	Estimated Cost
Agricultural Landuses	Pesticides and other chemicals used for farm operations can migrate into the water supply. Concentrated animal feeding operations for poultry production are common in the watershed. Poultry litter is spread on fields seasonally in or near the SWPA.	Town of Franklin	Ongoing		Meeting with owners

Table 9. Priority PSSC Management Strategies

PSSC or Critical Area	Management Activity	Responsible Protection Team Member	Status / Schedule	Comments	Estimated Cost
Agricultural Landuses	Consider working with the local Future Farmers of America members to distribute educational materials and best management practices information.	n/a	Not Started		
Agricultural Landuses	Work with the local livestock owners to determine the placement of animal waste disposal areas and/or areas for burying dead livestock.	n/a	Not Started		
Fish Kills and Deformities	Fish kills and intersex fish have been observed in areas of the Potomac and Shenandoah River watersheds. Many theories exist to explain the fish kills and intersex fish all relating to excess nutrients and contaminants in the watershed, such as poultry and livestock waste, commercial fertilizers, and pharmaceuticals and personal care products discharged through septic and waste water treatment plants. The United States Geological Survey (USGS) has conducted several studies to try to determine the potential cause.	Water Department	Ongoing		Reviewing updated info from USGS

Table 9. Priority PSSC Management Strategies

PSSC or Critical Area	Management Activity	Responsible Protection Team Member	Status / Schedule	Comments	Estimated Cost
Septic Tanks and Sewer Systems	There are residential septic systems in the protection watershed. Failing septic systems can leach into surrounding soils or run off into surface water. Untreated runoff can increase bacterial concentrations in source water, especially when the river is at low flow conditions. Under normal operating conditions on-site sewage treatment systems would not be expected to contaminate source water. However, failing septic systems may allow untreated sewage to contaminate the surface water source. Untreated sewage contains total coliform, particularly E. coli, along with other bacteria and parasites that could negatively impact human health if treatment processes are not adjusted to address the contamination.	Town of Franklin with communication to the local Health Department	Ongoing		Meeting with Owners
Highway Traffic and Maintenance	Thorn Creek Road and Dry Run Road parallel streams draining to primary and backup intakes. Trucks supplying poultry farms commonly use these roads. If an accident were to occur, spilled materials could potentially contaminate the source water.	Town of Franklin	Ongoing		Routine checkups of the reservoir and intake

10.0 EDUCATION AND OUTREACH STRATEGIES

The goal of education and outreach is to raise awareness of the need to protect drinking water supplies and build support for implementation strategies. Education and outreach activities will also ensure that affected citizens and other local stakeholders are kept informed and provided an opportunity to contribute to the development of the source water protection plan. Franklin, Municipality Of has created an Education and Outreach plan that describes activities it has either already implemented or could implement in the future to keep the local community involved in protecting their source of drinking water. This information can be found in **Table 10**.

Table 10. Education and Outreach Implementation Plan

Education and Outreach Strategy	Description of Activity	Responsible Protection Team Member	Status / Schedule	Comments	Estimated Cost
Partner with Watershed Association	Partner with local watershed associations or other civic groups. These groups may have similar goals and available volunteers that can integrate source water protection into their efforts.	Town of Franklin	Not Started	Contact will need to be made with the local watershed associations	Meeting with watershed groups
Media Campaign	Work with the local television stations to post source water and drinking water fact bulletins on public access television. Add quick links to OES, Health Department, DEP, etc on Town of Franklin Web sites	Town of Franklin	Ongoing	Working on completing Web Page	Cost to get web page operational and maintained.
Media Campaign	Place an advertisement in the local newspaper reminding business and residents to protect their source water.	n/a	Not Started		
Emergency Planning and Coordination	Participate with local fire departments and County Emergency Services on a regular basis. This will ensure that all the agencies understand the boundaries of the SWPA, are in constant communication with one another, and are prepared in the event of an emergency.	Water Department / Town of Franklin / OES	Ongoing	OES is part of the protection team to assist in this outreach	N/A
School Curricula	Work with the school system to incorporate source water activities into the school curricula. One example of school curricula is Project WET. For more information regarding free workshops to educate area teachers on Project WET, visit http://www.dep.wv.gov/WWE/getinvolved/WET/Pages/default.aspx , or contact the WVDEP at 304-926-0495.	Water Department	Not Started	Potentially coordinate with OES to present educational info to the schools in the watershed	Educational materials and handouts

Table 10. Education and Outreach Implementation Plan

Education and Outreach Strategy	Description of Activity	Responsible Protection Team Member	Status / Schedule	Comments	Estimated Cost
School Curricula	In addition, the USEPA offers free educational materials for teachers and students, including classroom lessons, fact sheets, and interactive games and activities, for grades K-12. These materials can be accessed at the following websites. For general source water protection: http://www.epa.gov/safewater/kids/index.html . For water conservation: http://www.epa.gov/watersense/resources/educational_materials.html Similar protection and conservation related resources can be found at the Groundwater Foundation website; http://www.groundwater.org/kc/kc.html ."	Water Department	Not Started	Potentially coordinate with OES to present educational info to the schools in the watershed	Educational materials and handouts
School Curricula	Visit school or invite students for a plant tour to tie in with school curricula.	Water Department	Not Started	Potentially coordinate with OES to present educational info to the schools in the watershed	Educational materials and handouts
School Curricula	Ask the school to include message in school newsletter to raise awareness about source water protection and conservation.	Water Department	Not Started	Potentially coordinate with OES to present educational info to the schools in the watershed	Educational materials and handouts

Table 10. Education and Outreach Implementation Plan

Education and Outreach Strategy	Description of Activity	Responsible Protection Team Member	Status / Schedule	Comments	Estimated Cost
Brochures, Pamphlets, and Letters	<p>Send a letter and/or brochure providing educational information to residences and businesses. These will alert the recipients of the need for source water protection and conservation. Businesses that use greater-than-household quantities of regulated substances may receive a different letter. See Appendix E for example letters and brochure that can be customized. Funding for the brochures may be available through the Wellhead and Source Water Protection Grant Program.</p> <p>The Source Water Collaborative has released an educational brochure building tool to assist with creating custom brochures targeting local decision makers. This tool is available at: http://www.yourwateryourdecision.org and may assist in community planning and development. USEPA Water Sense Simple Steps to Save Water (EPA-832-F-07-011) presents benefits of conserving water. Focusing not only on the environment, but also on the financial savings associated with conservation. The brochure can be viewed at: http://www.epa.gov/watersense/docs/ws_simplestep_s508.pdf</p>	Water Department and Town of Franklin	Not Started	Possibly provide information after review of available brochures, pamphlets, etc.	Printing and initial cost of material

Table 10. Education and Outreach Implementation Plan

Education and Outreach Strategy	Description of Activity	Responsible Protection Team Member	Status / Schedule	Comments	Estimated Cost
Brochures, Pamphlets, and Letters	Several organizations provide information and resources on the internet, related to certain source water concerns and PCSs. The utility will consider obtaining these materials when needed, to educate the community. Examples of these resources are described below.	Water Department and Town of Franklin	Not Started	Possibly provide information after review of available brochures, pamphlets, etc.	Printing and initial cost of material
Brochures, Pamphlets, and Letters	Due to recent heightened concerns about the effects of pharmaceuticals in surface water bodies, the Ohio River Valley Water Sanitation Commission (ORSANCO) developed a pamphlet regarding pharmaceutical disposal. This pamphlet can be viewed and possibly ordered from: http://orsanco.org/index.php/brochures	n/a	Not Started		
Brochures, Pamphlets, and Letters	The Source Water Collaborative has released an educational brochure building tool to assist with creating custom brochures targeting local decision makers. This tool is available at: http://www.yourwateryourdecision.org and may assist in community planning and development.	Water Department and Town of Franklin	Not Started	Possibly provide information after review of available brochures, pamphlets, etc.	Printing and initial cost of material
Brochures, Pamphlets, and Letters	USEPA Water Sense Simple Steps to Save Water (EPA-832-F-07-011) presents benefits of conserving water. Focusing not only on the environment, but also on the financial savings associated with conservation. The brochure can be viewed at: http://www.epa.gov/watersense/docs/ws_simplesteps508.pdf	Water Department and Town of Franklin	Not Started	Possibly provide information after review of available brochures, pamphlets, etc.	Printing and initial cost of material

Table 10. Education and Outreach Implementation Plan

Education and Outreach Strategy	Description of Activity	Responsible Protection Team Member	Status / Schedule	Comments	Estimated Cost
Consumer Confidence Report	The water system publishes a Consumer Confidence Report (CCR) annually, as required by the Safe Drinking Water Act, which is sent to all water customers. Information concerning the Source Water Assessment is included in the CCR. In the future, the system will include a reference to this source water protection plan and how customers can access a copy.	Water Department and Town of Franklin	Not Started	Published as required	Mail Out
Consumer Confidence Report	Due to recent heightened concerns about the effects of pharmaceuticals in surface water bodies and the fact that many source water areas are in a karst landscape, the utility should include information about pharmaceuticals and how to properly dispose of them in the CCR.	Water Department and Town of Franklin	Not Started	Published as required	Mail Out
County Fair and Festivals	Consider providing information on source water protection for the County Health Department's booth at the county fair or local festivals, should they have any.	Town of Franklin/Water Department	Not Started	Review the possibility of setting up information booth at Fair	Booth rental, hand out material.
Plant Tours	Provide tours of the water plant to interested organizations such as watershed groups, schools, and civic organizations. Tours will be offered as requested.	Water Department	Not Started	Potentially schedule with some of the local organizations	Time to conduct tours.
Plant Tours	Organize a tour with local Emergency Responders to make them familiar with the facilities in the event of an emergency.	Water Department	Not Started	Potentially schedule with some of the local organizations	Time to conduct tours.

Table 10. Education and Outreach Implementation Plan

Education and Outreach Strategy	Description of Activity	Responsible Protection Team Member	Status / Schedule	Comments	Estimated Cost
Drinking Water Protection Signs	Erecting Drinking Water Protection Signs along highways is a common awareness strategy in some states and recommended by the USEPA. Signs are placed to alert the public to the SWPA and about what to do in case of accidental spills. The WV Division of Highways (WVDOH) has not approved the placement of signs along or adjacent to state highway right of ways for the purposes of source water protection, except for specific sensitive areas. If you believe erecting signs along a state highway is imperative to your source water protection, please contact WVDOH Traffic Engineering Division at 304-558-3063. If approved the WVDOH may place and maintain signs along state highways at mutually acceptable locations.	Water Department and Town of Franklin	Not Started	Signage at the reservoir and along Thorn Creek could be very beneficial	Signage
Drinking Water Protection Signs	In addition, the WVDHHR recommends erecting awareness signs in public areas and along city streets not associated with state highways. If interested in erecting Drinking Water Protection Signs, contact the WVDHHR SWAP program at 304-558-2981. The WVDHHR may distribute standard signs or provide financial support through a Source Water Protection Grant. The water system will be responsible for erecting and maintaining the signs in public areas and along city streets.	Water Department and Town of Franklin	Not Started	Signage at the reservoir and along Thorn Creek could be very beneficial	Signage

Table 10. Education and Outreach Implementation Plan

Education and Outreach Strategy	Description of Activity	Responsible Protection Team Member	Status / Schedule	Comments	Estimated Cost
Public Meeting	The water system could hold an informational meeting with local residents about source water protection efforts. The meeting will increase awareness of the connection between land use and drinking water quality. This meeting could be structured as a water fair/public event with drinking water displays and activities. This can be combined with activities of the local watershed associations.	Town of Franklin	Ongoing	Add SWPP meetings to designated council meetings – schedule to be determined.	N/A

11.0 CONTINGENCY PLAN

The goal of contingency planning is to identify and document how the utility will prepare for and respond to any drinking water shortages or emergencies that may occur due to short and long term water interruption, or incidents of spill or contamination. During contingency planning, utilities should examine their capacity to protect their intake, treatment, and distribution system from contamination. They should also review their ability to use alternative sources and minimize water loss, as well as their ability to operate during power outages. In addition, utilities should report the feasibility of establishing an early warning monitoring system and meeting future water demands.

Isolating or diverting any possible contaminant from the intake for a public water system is an important strategy in the event of an emergency. One commonly used method of diverting contaminants from an intake is establishing booms around the intake. This can be effective, but only for contaminants that float on the surface of the water. Alternatively, utilities can choose to pump floating contaminants from the water or chemically neutralize the contaminant before it enters the treatment facility.

Public utilities using surface sources should be able to close the intake by one means or another. However, depending upon the system, methods for doing so could vary greatly and include closing valves, lowering hatches or gates, raising the intake piping out of the water, or shutting down pumps. Systems should have plans in place in advance as to the best method to protect the intake and treatment facility. Utilities may benefit from turning off pumps and, if possible, closing the intake opening to prevent contaminants from entering the piping leading to the pumps. Utilities should also have a plan in place to sample raw water to identify the movement of a contaminant plume and allow for maximum pumping time before shutting down an intake (See Early Warning Monitoring System). The amount of time that an intake can remain closed depends on the water infrastructure and should be determined by the utility before an emergency occurs. The longer an intake can remain closed in such a case, the better.

Raw and treated water storage capacity also becomes extremely important in the event of such an emergency. Storage capacity can directly determine how effectively a water system can respond to a contamination event and how long an intake can remain closed. Information regarding the water shortage response capability of Franklin, Municipality Of is provided in **Table 11**.

11.1. RESPONSE NETWORKS AND COMMUNICATION

PSSC data from some agencies (ex. WVDHSEM, WVDEP, etc.) may be restricted due to the sensitive nature of the data. Locational data will be provided to the public water utility. However, to obtain specific details regarding contaminants, (such as information included in Tier II reports), water utilities should contact the local emergency planning commission (LEPC) or agencies, directly. While the maps and lists of the PSSCs and regulated sites are to be maintained in a confidential manner, these data are provided in **Appendix A. Figures** for internal review and planning uses only.

Table 11. Franklin, Municipality Of Water Shortage Response Capacity

Can the water utility isolate or divert contamination from the intake and groundwater supply?	Yes
Describe the results of an examination and analysis of the public water system's ability to isolate or divert contaminated waters from its surface water intake or groundwater supply:	Isolate - manual valves being closed.
Describe the results of an examination and analysis of the public water system's existing ability to switch to an alternative water source or intake in the event of contamination of its primary water source:	Thorn Creek. Shut off valves to spring -- prime existing alternate source from Thorn Creek.
Is the Utility able to close the water intake in the event of a spill?	Yes
How long can the Utility keep the intake closed?	3.2 days based on average usage; 1.74 days based on single day peak.
Describe the process to close the intake:	Manually close valve
Describe the treated water system's storage capacity of the water system:	1 - 300,000 gallon tank 1 - 350,000 gallon tank 1 - 43,000 gallon tank 2 - 50,000 gallon tanks
Gallons of storage capacity (raw water)	0
Gallons of storage capacity (treated water)	793,000
Is the Utility a member of WVRWA Emergency Response Team?:	Yes
Is the Utility a member of WV-WARN?:	Yes
List other agreements to provide receive assistance in case of emergency:	N/A

11.2. OPERATION DURING LOSS OF POWER

Franklin, Municipality Of analyzed its ability to operate effectively during a loss of power. This involved ensuring a means to supply water through treatment, storage, and distribution without creating a public health emergency. Information regarding the utility's capacity for operation during power outages is summarized in **Table 12**.

Table 12. Generator Capacity

Can you connect to a generator at the intake/wellhead?:	No
Please provide a scenario that best describes your system:	
What do you have (KW)?	
What do you need (KW)?	
Can you connect to a generator at the treatment facility?:	Yes
Please provide a scenario that best describes your system:	Existing propane generator 35kW
What do you have (KW)?	35.00
What do you need (KW)?	35.00

Can you connect to a generator at the distribution system?:	No		
Please provide a scenario that best describes your system:			
What do you have (KW)?			
What do you need (KW)?			
Does the utility have fuel on hand for generator?:	Yes		
Hours:	72		
Gallons:	1,000		
Provide a list of suppliers and alternate suppliers that could provide fuel in the event of an emergency:		Supplier	Phone Number
	Fuel	Southern States Petersburg	(304)257-1771
Does the utility test the generator(s) periodically?:	Yes		
Does the utility routinely maintain the generator(s)?:	Yes		
If the Utility does not have generator or the ability to connect to a generator, describe plans to respond to power outages:	N/A		

11.3. FUTURE WATER SUPPLY NEEDS

When planning for potential emergencies and developing contingency plans, a utility needs to not only consider their current demands for treated water but also account for likely future needs. This could mean expanding current intake sources or developing new ones in the near future. This can be an expensive and time consuming process, and any water utility should take this into account when determining emergency preparedness. Franklin, Municipality Of has analyzed its ability to meet future water demands at current capacity, and this information is included in **Table 13**.

Table 13. Future Water Supply Needs for Franklin, Municipality Of

Is the Utility able to meet water demands with the current capacity for the next five years?	Yes
Explain how you plan to do so:	Maintain existing lines while seeking infrastructure projects to replace aging lines.

11.4. WATER LOSS CALCULATION

In any public water system there is a certain percentage of the total treated water that does not reach the customer. Some of this water is used in treatment plant processes such as back washing filters or flushing piping, but there is usually at least a small percentage that goes unaccounted for. To measure and report on this unaccounted for water, a public utility must use the method described in the Public Service Commission's rule, Rules for the Government of Water Utilities, 150CSR7, section 5.6. The rule defines unaccounted for water as the volume of water introduced into the distribution system less all metered usage and all known non-metered usage which can be estimated with reasonable accuracy.

To further clarify, metered usages are most often those that are distributed to customers. Non-metered usages that are being estimated include usage by fire departments for fires or training, un-metered bulk sells, flushing to maintain the distribution system, and water used for backwashing filters and cleaning settling basins. By totaling the

known metered and non-metered uses the utility calculates unaccounted for water. Note: To complete annual reports submitted to the PSC, utilities typically account for known water main breaks by estimating the amount of water lost. However, for the purposes of the source water protection plan, any water lost due to leaks, even if the system is aware of how much water is lost at a main break, is not considered a use. Water lost through leaks and main breaks cannot be controlled during a water shortages or other emergencies and should be included in the calculation of percentage of water loss for purposes of the source water protection plan. The data in **Table 13** is taken from the most recently submitted Franklin, Municipality Of PSC Annual Report.

Table 14. Water Loss Information

Water pumped - Total Gallons:		88,362,000
*Water purchased - Total Gallons:		0
Total gallons of water pumped and purchased:		88,362,000
Total gallons of water loss accounted for except main leaks:	Mains, plant, filters, flushing, etc - Total Gallons:	4,623,000
	Fire department - Total Gallons:	81,000
	Back washing - Total Gallons:	1,635,000
	Blowing settling basins - Total Gallons:	0
Total Accounted for Water Loss		6,339,000
Unaccounted for lost water - Total Gallons:		34,472,000
Water sold - Gallons:		27,051,000
Water Lost From Main Leaks:		20,500,000
Total Gallons of Unaccounted for Lost Water and Water Lost from Main Leaks:		54,972,000
Total percent unaccounted for water		62
Describe the measures to correct water loss greater than 15%:	The Town is aware that they are losing an unaccountable amount of water due to water leaks. They are continuously repairing leaks, but are not very successful in locating the leaks due to the rocky soil. Additional unaccountable water can be related to older meters which the Town is replacing as funding is available. The Town is currently undertaking a water project that will replace the existing river crossings, which are suspected to be leaking into the river.	

11.5. EARLY WARNING MONITORING SYSTEM

Public water utilities are required to provide an examination of the technical and economic feasibility of implementing an early warning monitoring system. Implementing an early warning monitoring system may be approached in different ways depending upon the water utility's resources and threats to the source water. A utility may install a continuous monitoring system that will provide real time information regarding water quality conditions. This would require utilities to analyze the data to establish what condition is indicative of a contamination event. Continuous monitoring will provide results for a predetermined set of parameters. The more parameters that are being monitored, the more sophisticated the monitoring equipment will need to be. When establishing a continuous monitoring system, the utility should consider the logistics of placing and maintaining the equipment, and receiving output data from the equipment.

Alternately, or in addition, a utility may also pull periodic grab samples on a regular basis, or in case of a reported incident. The grab samples may be analyzed for specific contaminants. A utility should examine their PSSCs to

determine what chemical contaminants could pose a threat to the water source. If possible, the utility should plan in advance how those contaminants will be detected. Consideration should be given to where samples will be collected, the preservations and hold times for samples, available laboratories to analyze samples, and costs associated with the sampling event. Regardless of the type of monitoring (continuous or grab), utilities should collect samples for their source throughout the year to better understand the baseline water quality conditions and natural seasonal fluctuations. Establishing a baseline will help determine if changes in the water quality are indicative of a contamination event and inform the needed response.

Every utility should establish a system or process for receiving or detecting chemical threats with sufficient time to respond to protect the treatment facility and public health. All approaches to receiving and responding to an early warning should incorporate communication with facility owners and operators that pose a threat to the water quality, with state and local emergency response agencies, with surrounding water utilities, and with the public. Communication plays an important role in knowing how to interpret data and how to respond.

Franklin, Municipality Of has analyzed its ability to monitor for and detect potential contaminants that could impact its source water. Information regarding this utility's early warning monitoring system capabilities is provided in **Table 15** and in **Appendix B**.

Table 15. Early Warning Monitoring System Capabilities

Does your system currently receive spill notifications from a state agency, neighboring water system, local emergency responders, or other facilities?	No	
From whom do you receive notices?		
Are you aware of any facilities, land uses, or critical areas within your protection areas where chemical contaminants could be released or spilled?	No	
Are you prepared to detect potential contaminants if notified of a spill?	Yes	
List laboratories (and contact information) on whom you would rely to analyze water samples in case of a reported spill.	Laboratories	
	Name	Phone Number
	Pace Analytical	(304)241-5861
	WVDHHR	(304)725-9453
	Dept. of Agriculture	(304)558-3550
Do you have an understanding of baseline or normal conditions for your source water quality that accounts for seasonal fluctuations?	Yes	
Does your utility (aside from turbidity monitoring) currently monitor your raw water through continuous monitoring at the surface water intake or groundwater source to detect changes in water quality that could indicate contamination?	Yes	
Does your utility collect periodic grab samples (ex. possess reserved sample bottles, on-call laboratory services, and trained personnel) in response to a spill notification or to investigate changes in water quality that could indicate contamination?	Yes	
Please explain:	Quarterly samples	

Provide or estimate the capital and O&M costs for your current or proposed early warning system or upgraded system.	Capital Cost:	54,824
	O&M Cost:	5,996
Do you serve more than 100,000 customers?	No	
Does your system currently receive spill notifications from a state agency, neighboring water system, local emergency responders, or other facilities?	No	
Are you prepared to detect potential contaminants if notified of a spill?	Yes	

12.0 SINGLE SOURCE FEASIBILITY STUDY

If a public water utility's water supply plant is served by a single-source intake to a surface water source of supply or a surface water influenced source of supply, the submitted source water protection plan must also include an examination and analysis of the technical and economic feasibility of alternative sources of water to provide continued safe and reliable public water service in the event that its primary source of supply is detrimentally affected by contamination, release, spill event or other reason. These alternatives may include a secondary intake, two days of additional raw or treated water storage, an interconnection with neighboring systems, or other options identified on a local level. Note: a suitable secondary intake would draw water supplies from a substantially different location or water source.

To accomplish this requirement, utilities should examine all existing or possible alternatives and rank them by their technical, economic, and environmental feasibility. To have a consistent and complete method for ranking alternatives, WVBPH has developed a feasibility study guide. This guide provides several criteria to consider for each category, organized in a Feasibility Study Matrix. By completing the Feasibility Study Matrix, utilities will demonstrate the process used to examine the feasibility of each alternative and document scores that compare the alternatives. The Feasibility Study matrix and summary of the results are presented in an alternatives feasibility study attached as **Appendix D**.

13.0 COMMUNICATION PLAN

Franklin, Municipality Of has also developed a Communication Plan that documents the manner in which the public water utility, working in concert with state and local emergency response agencies, shall notify the local health agencies and the public of the initial spill or contamination event and provide updated information related to any contamination or impairment of the system's drinking water supply. The initial notification to the public will occur in any event no later than thirty minutes after the public water system becomes aware of the spill, release, or potential contamination of the public water system. A copy of the source water protection plan and the Communication Plan has been provided to the local fire department. Franklin, Municipality Of will update the Communication Plan as needed to ensure contact information is up to date.

Procedures should be in place to effectively react to the kinds of catastrophic spills that can reasonably be predicted at the source location or within the SWPA. The chain-of-command, notification procedures and response actions should be known by all water system employees.

The WVBPH has developed a recommended communication plan template that provides a tiered incident communication process to provide a universal system of alert levels to utilities and water system managers. The comprehensive Communication Plan for Franklin, Municipality Of is attached as **Appendix C** for internal review and planning purposes only.

The West Virginia Department of Environmental Protection is capable of providing expertise and assistance related to prevention, containment, and clean-up of chemical spills. The West Virginia Department of Environmental Protection Emergency Response 24-hour Phone is 1-800-642-3074. The West Virginia Department of Environmental Protection also operates an upstream distance estimator that can be used to determine the distance from a spill site to the closest public water supply surface water intake.

14.0 EMERGENCY RESPONSE

A public water utility must be prepared for any number of emergency scenarios and events that would require immediate response. It is imperative that information about key contacts, emergency services, and downstream water systems be posted and readily available in the event of an emergency. Elements of this source water protection plan, such as the contingency planning and communication plan, may contain similar information to the utility's emergency response plan. However, the emergency response plan is to be kept confidential and is not included in this source water protection plan. An Emergency Short Form is included in **Appendix C** to support the Communicate Plan by providing quick access to important information about emergency response and are to be used for internal review and planning purposes only.

15.0 CONCLUSION

This report represents a detailed explanation of the required elements of Franklin, Municipality Of's Source Water Protection Plan. Any supporting documentation or other materials that the utility considers relevant to their plan can be found in **Appendix E**.

This source water protection plan is intended to help prepare community public water systems all over West Virginia to properly handle any emergencies that might compromise the quality of the system's source water supply. It is imperative that this plan is updated as often as necessary to reflect the changing circumstances within the water system. The protection team should continue to meet regularly and continue to engage the public whenever possible. Communities taking local responsibility for the quality of their source water is the most effective way to prevent contamination and protect a water system against contaminated drinking water. Community cooperation, sufficient preparation, and accurate monitoring are all critical components of this source water protection plan, and a multi-faceted approach is the only way to ensure that a system is as protected as possible against source water degradation.

APPENDIX A. FIGURES AND TABLES

Water Source / Delineation

Surface Water Sources



Intake: Town Spring

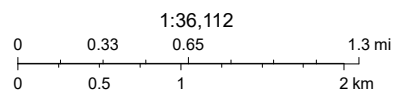
Map of watershed delineation area

Franklin Wellhead Protection Area



7/25/2024, 11:00:35 AM

-  WHPA Query: Well Head Protection Area
-  State_WV



Sources: Esri, Airbus DS, USGS, NGA, NASA, CGIAR, N Robinson, NCEAS, NLS, OS, NMA, Geodatastyrelsen, Rijkswaterstaat, GSA, Geoland, FEMA, Intermap and the GIS user community

Source Water Assessment and Wellhead Protection Programs

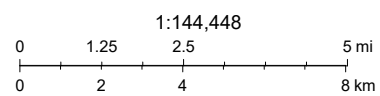
Map of watershed delineation area

Franklin Watershed, ZCC, and ZPC



7/25/2024, 10:54:43 AM

- PWS Query: Zone of Peripheral Concern
- PWS Query: Zone of Critical Concern
- PWS Query: Watersheds
- State_WV



Sources: Esri, Airbus DS, USGS, NGA, NASA, CGIAR, N Robinson, NCEAS, NLS, OS, NMA, Geodastyrrelsen, Rijkswaterstaat, GSA, Geoland, FEMA, Intermap and the GIS user community

Source Water Assessment and Wellhead Protection Programs

PSSC Maps

Local and Regional PSSC Map

Non Regulated ZCC PSSCs



5/6/2024, 8:35:52 AM

PSSC Query: Source Water Protection PSSC

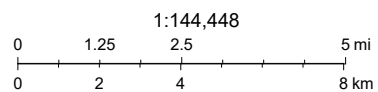
- Agriculture
- Residential

PWS Query: Zone of Critical Concern

PWS Query: Zone of Peripheral Concern

PWS Query: Watersheds

State_WW



Sources: Esri, Airbus DS, USGS, NGA, NASA, CGIAR, N Robinson, NCEAS, NLS, OS, NMA, Geodatastyrelsen, Rijkswaterstaat, GSA, Geoland, FEMA, Intermap and the GIS user community

Source Water Assessment and Wellhead Protection Programs

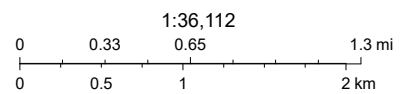
Non Regulated WHPA PSSCs



5/6/2024, 8:52:07 AM

PSSC Query: Source Water Protection PSSC

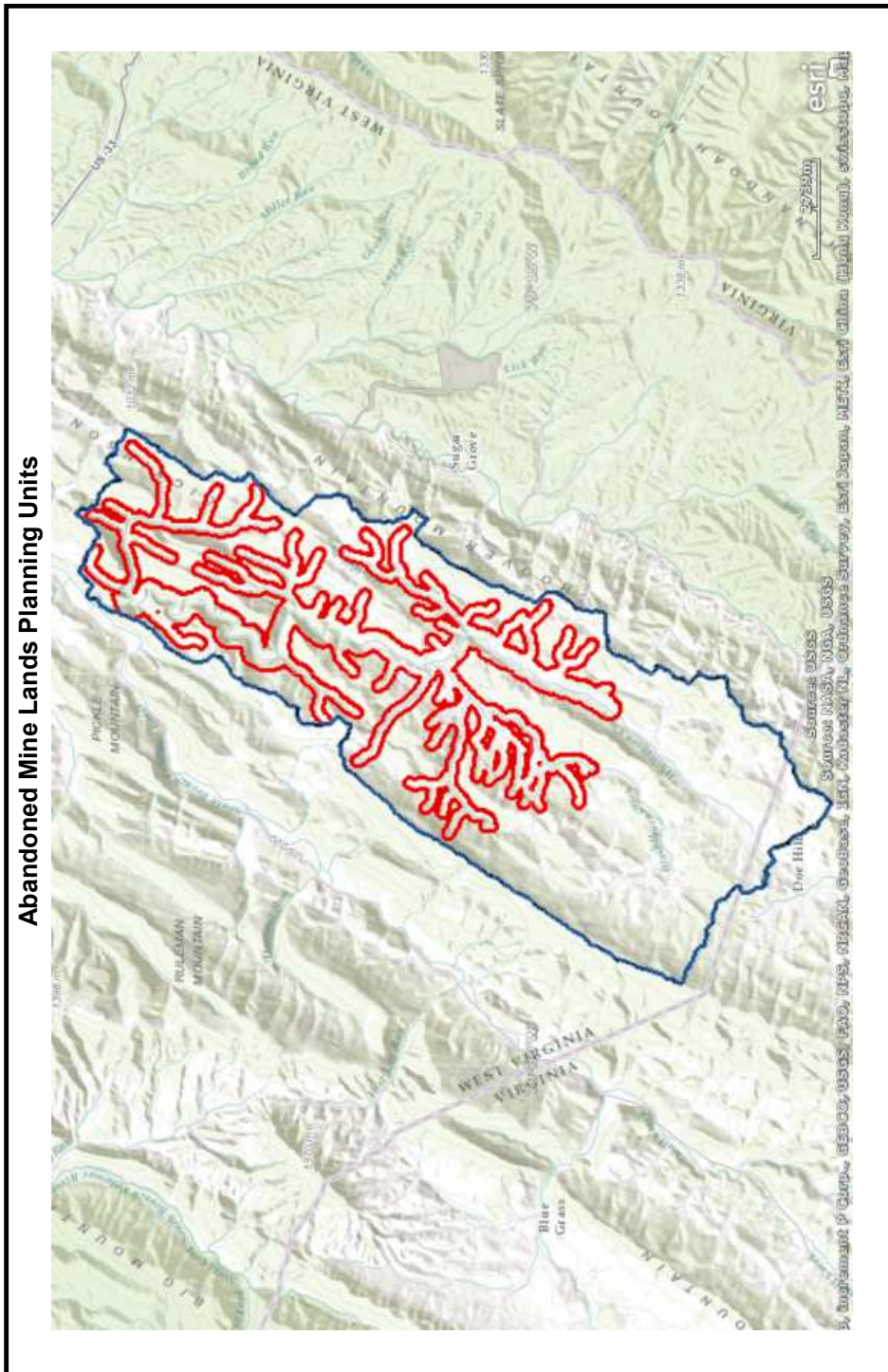
- Agriculture
- WHPA Query: Well Head Protection Area
- State_WV



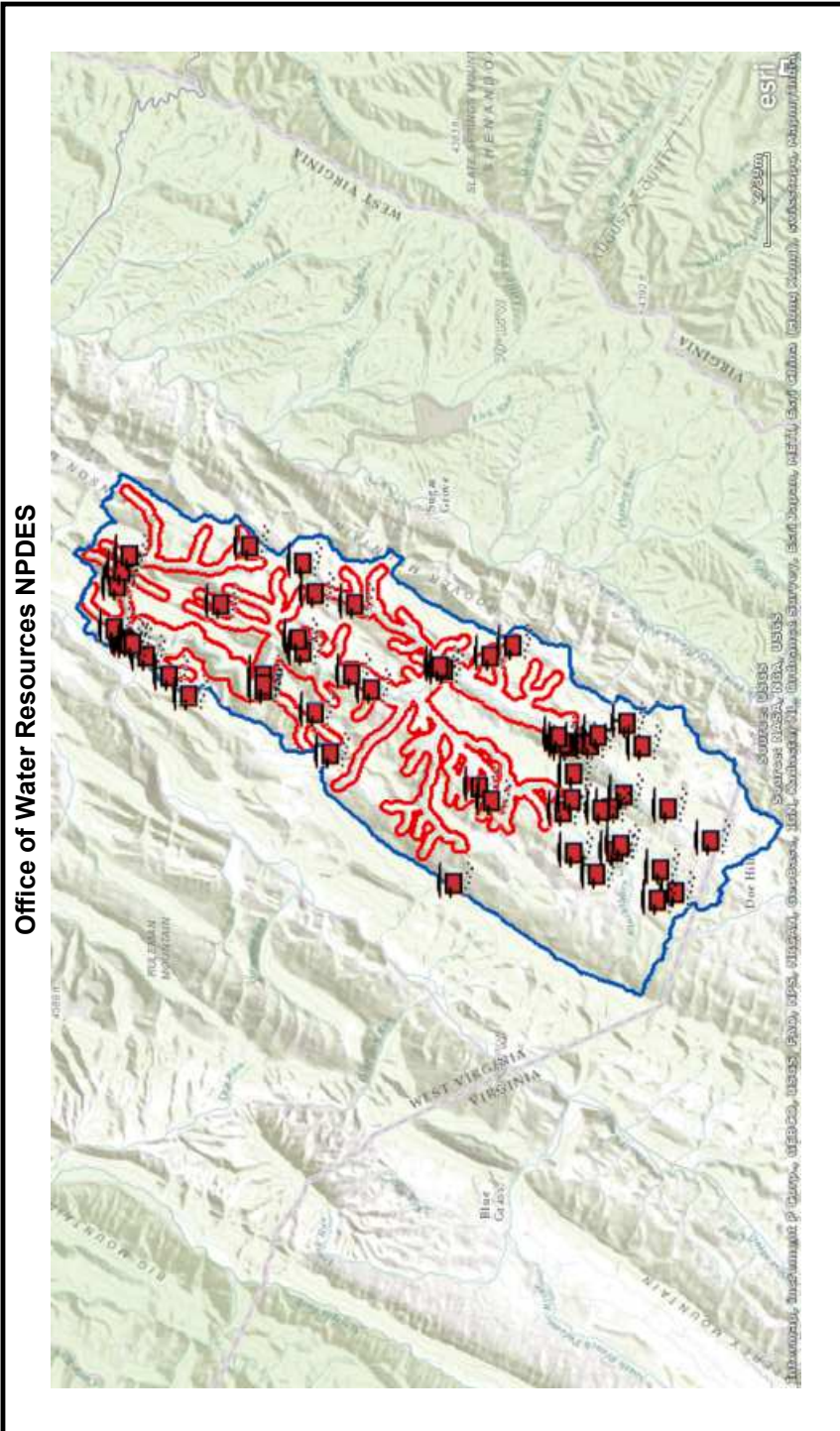
Sources: Esri, Airbus DS, USGS, NGA, NASA, CGIAR, N Robinson, NCEAS, NLS, OS, NMA, Geodatastyrelsen, Rijkswaterstaat, GSA, Geoland, FEMA, Intermap and the GIS user community

Source Water Assessment and Wellhead Protection Programs

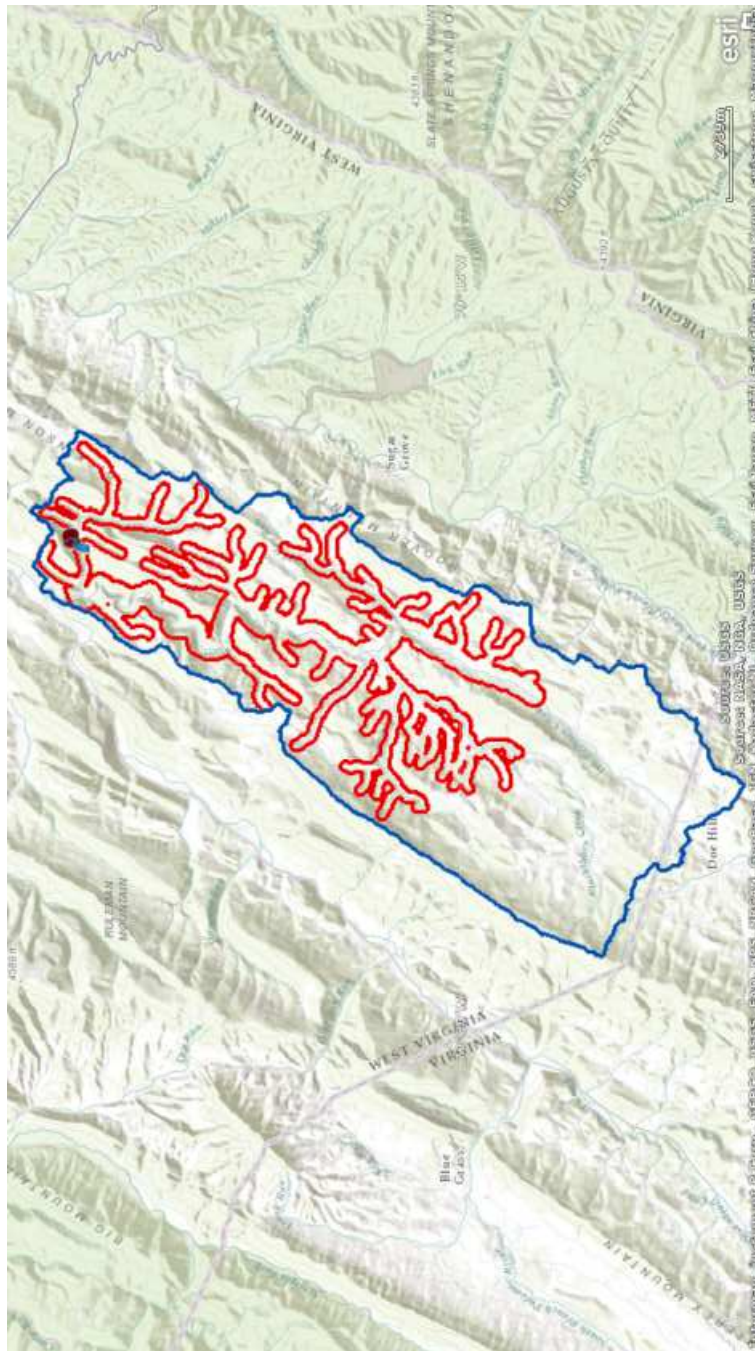
Regulated PSSC Map



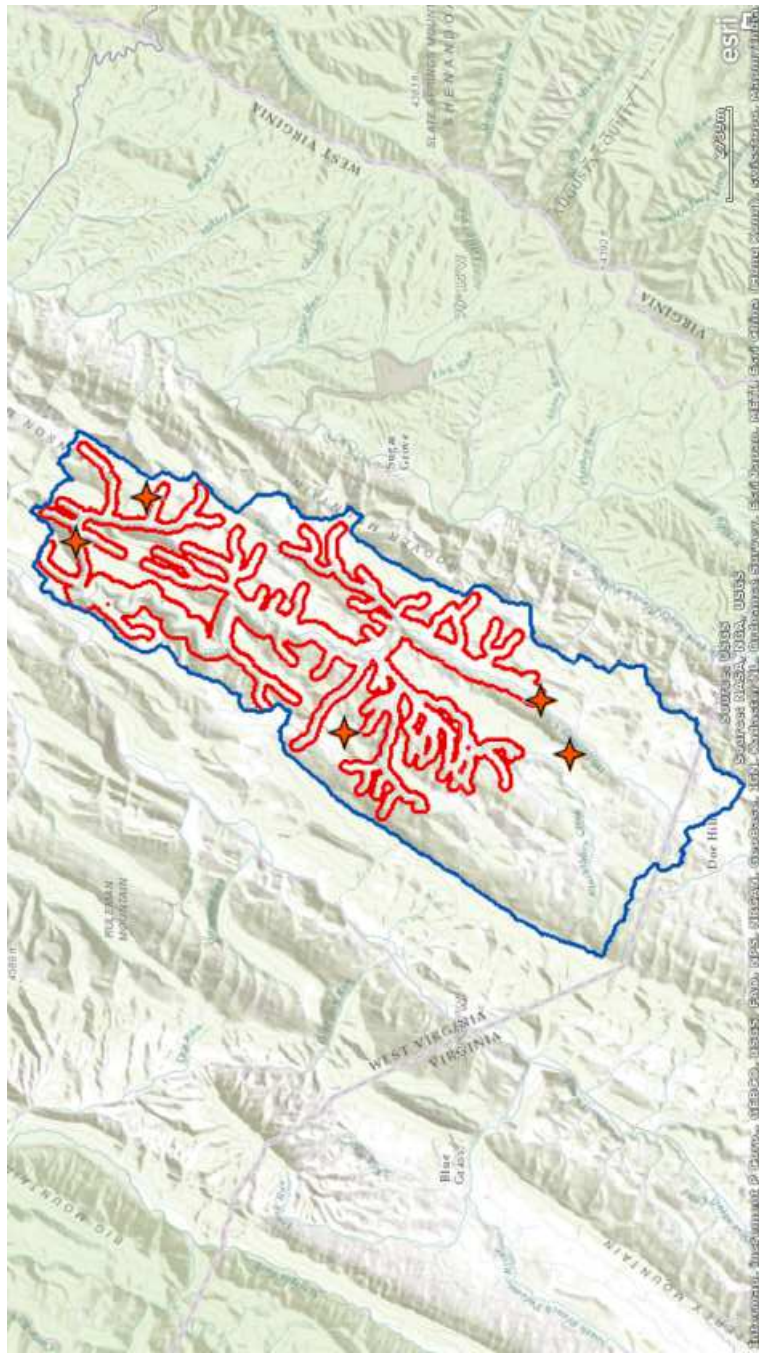
Abandoned Mine Lands Planning Units



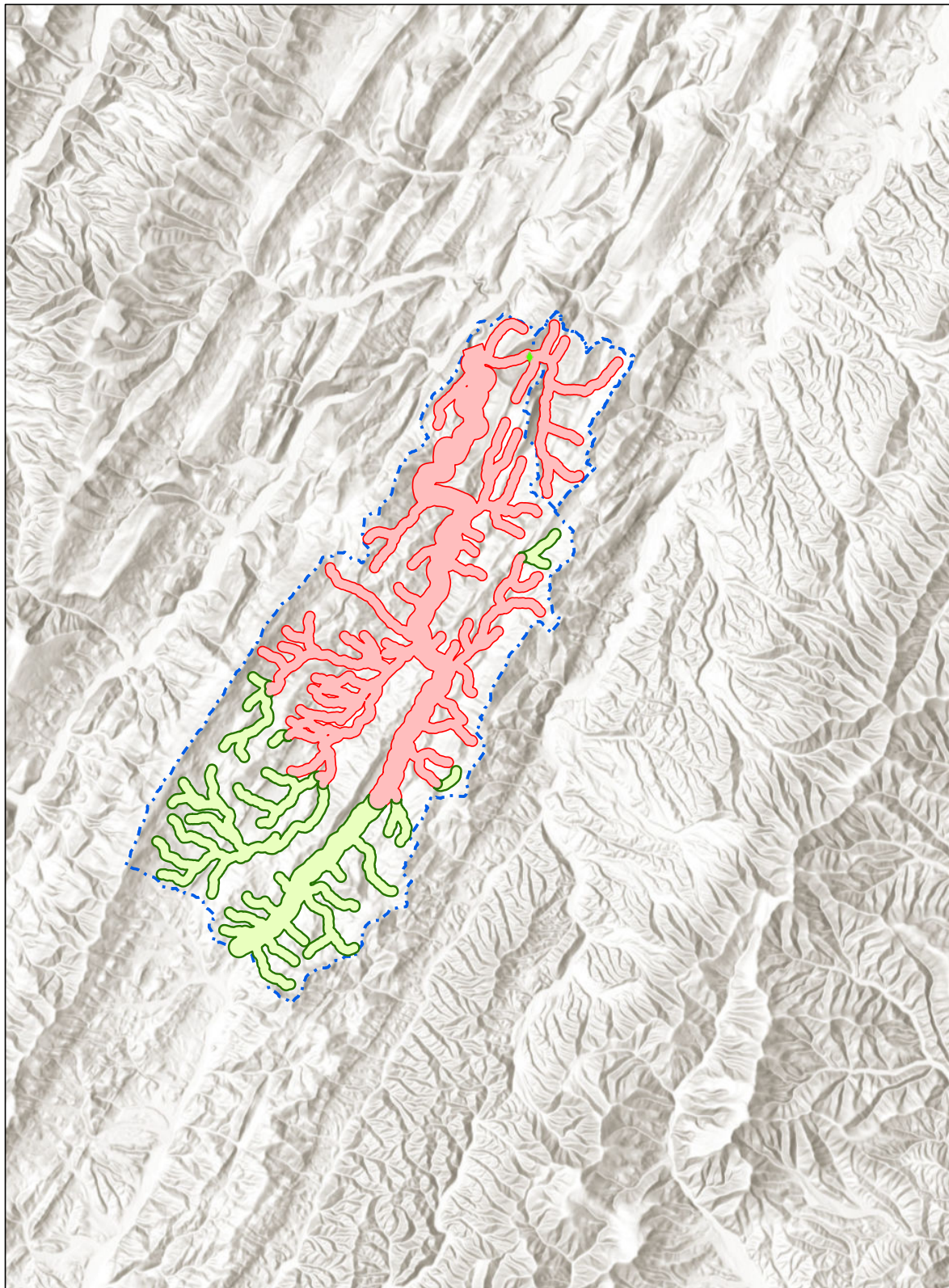
Office of Water Resources NPDES Outlets







Superfund Resource Conservation & Recovery Act Facilities

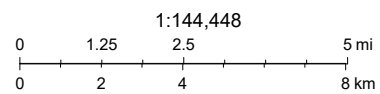


All Regulated ZCC PSSCs



5/6/2024, 8:41:07 AM

-  PSSC Query: USEPA Tier II Sites
-  PWS Query: Zone of Peripheral Concern - PWS Name
-  PWS Query: Zone of Critical Concern - PWS Name
-  PWS Query: Watersheds - PWS Name



Sources: Esri, Airbus DS, USGS, NGA, NASA, CGIAR, N Robinson, NCEAS, NLS, OS, NMA, Geodatastyrelsen, Rijkswaterstaat, GSA, Geoland, FEMA, Intermap and the GIS user community

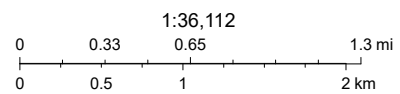
Source Water Assessment and Wellhead Protection Programs

Regulated WHPA PSSCs (None in WHPA)



5/6/2024, 8:55:07 AM

 WHPA Query: Well Head Protection Area



Sources: Esri, Airbus DS, USGS, NGA, NASA, CGIAR, N Robinson, NCEAS, NLS, OS, NMA, Geodatastyrelsen, Rijkswaterstaat, GSA, Geoland, FEMA, Intermap and the GIS user community

Source Water Assessment and Wellhead Protection Programs

PSSC Lists

Local and Regional PSSC List			
SOURCE WATER ASSESSMENT & PROTECTION PCS			
OBJECTID	x	Y	EHS_GIS_SQSLDE_GISTA_SWAP_PCS_SITE_NAME
1	645637.0441	4271817.187	Pasture
2	645790.505	4270473.941	Pasture
3	641863.1206	4270154.661	Pasture
4	646536.5828	4270967.128	Rocky Pine Farms, chick production facility
5	644639.3954	4269041.009	Jim and Pat McClung Farm with one barn on Capito Hill Road
6	645051.5853	4273834.631	Treatment plant located at spring
7	644890.7032	4273749.066	Residential Area
			EHS_GIS_SQSLDE_GISTA_SWAP_PCS_SITEDescription
			Pasture*
			Pasture*
			Pasture*
			Confined Animal Feeding Operations
			Confined Animal Feeding Operations
			Drinking Water Treatment Plants
			Septic Systems (leach field)*

Regulated PSSC List

ABANDONED MINE LANDS PLANNING UNITS

OBJECTID	x	y	STATES	NFHAP_UNIT
1	646326.2582	4267855.7	WV	Little Fork-South Fork South Branch Potomac River
2	641977.3886	4260015.2	VA,WV	Brushy Fork-South Fork South Branch Potomac River
3	633424.5042	4259066.529	VA,WV	Strait Creek
4	638679.4706	4267456.856	VA,WV	East Dry Run-South Branch Potomac River
5	647586.6196	4272212.91	WV	Miller Run-South Fork South Branch Potomac River
6	645831.7602	4274575.851	WV	Smith Creek-South Branch Potomac River
7	640694.3506	4264703.27	VA,WV	Whitehorn Creek-Thorn Creek
8	635674.3965	4256213.026	VA,WV	Davis Run-Bullpasture River

OFFICE OF WATER RESOURCES NPDES

OBJECTID	x	y	permit_id	fac_name	issuedate	expiredate	sub_desc
1	636306.5327	4257213.829	31473	NA	9/14/2006	NA	Septic Seal Permit
2	643206.9476	4262842.138	11932	NA	5/21/2002	NA	Septic Seal Permit
3	644971.0253	4268043.352	35031	NA	9/10/2007	NA	Septic Seal Permit
4	637490.1841	4259029.364	10140	NA	10/9/2001	NA	Septic Seal Permit
5	637695.9042	4258836.418	38763	NA	10/15/2008	NA	Septic Seal Permit
6	642473.6969	4272327.855	12427	NA	7/9/2002	NA	Septic Seal Permit
7	642176.4652	4266306.207	14186	NA	12/6/2002	NA	Septic Seal Permit
8	638629.4637	4260607.211	30350	NA	5/15/2006	NA	Septic Seal Permit
9	640229.1672	4267491.382	38762	NA	10/15/2008	NA	Septic Seal Permit
10	643530.1695	4273613.731	48498	NA	7/12/2013	NA	Septic Seal Permit
11	642087.4387	4269522.826	11927	NA	5/21/2002	NA	Septic Seal Permit
12	643532.9816	4262177.225	44820	NA	7/8/2011	NA	Septic Seal Permit
13	640607.7625	4260465.494	30881	NA	7/13/2006	NA	Septic Seal Permit
14	643267.7743	4268371.766	39817	NA	4/8/2009	NA	Septic Seal Permit
15	643409.493	4273523.486	22804	NA	10/19/2004	NA	Septic Seal Permit
16	643036.348	4272981.552	10335	NA	11/7/2001	NA	Septic Seal Permit
17	642772.9835	4264189.423	22386	NA	8/31/2004	NA	Septic Seal Permit
18	637837.0744	4256196.616	26502	NA	7/12/2005	NA	Septic Seal Permit
19	639305.857	4263057.941	18309	NA	9/12/2003	NA	Septic Seal Permit
20	636062.7714	4257765.234	22387	NA	8/31/2004	NA	Septic Seal Permit
21	641884.0083	4271694.048	48040	NA	4/11/2013	NA	Septic Seal Permit
22	645863.9267	4268391.565	12433	NA	7/9/2002	NA	Septic Seal Permit
23	645083.1855	4273885.692	WVG640022	Town of Franklin	9/14/2000	7/18/2018	Water Treatment Plant (GP)
24	641282.8547	4258722.606	35030	NA	9/10/2007	NA	Septic Seal Permit
25	638986.2446	4260301.735	46280	NA	4/6/2012	NA	Septic Seal Permit
26	640619.6923	4258263.807	35029	NA	9/10/2007	NA	Septic Seal Permit
27	636477.0489	4263788.388	40074	NA	5/22/2009	NA	Septic Seal Permit
28	640683.2686	4260107.738	46785	NA	7/13/2012	NA	Septic Seal Permit
29	642596.679	4266916.668	31471	NA	9/14/2006	NA	Septic Seal Permit
30	642523.8914	4269510.265	37449	NA	5/15/2008	NA	Septic Seal Permit
31	638928.7457	4262699.096	37450	NA	5/15/2008	NA	Septic Seal Permit
32	645564.4041	4273738.612	16506	NA	5/6/2003	NA	Septic Seal Permit
33	645564.4041	4273738.612	16505	NA	5/6/2003	NA	Septic Seal Permit
34	639177.4787	4258794.223	12143	NA	6/5/2002	NA	Septic Seal Permit
35	638760.1786	4259207.047	44656	NA	6/16/2011	NA	Septic Seal Permit
36	637416.4106	4260227.266	28774	NA	1/11/2006	NA	Septic Seal Permit
37	640635.4834	4259795.247	42439	NA	5/18/2010	NA	Septic Seal Permit
38	643621.8363	4268506.842	40072	NA	5/22/2009	NA	Septic Seal Permit
39	636815.4352	4259553.051	33010	NA	2/19/2007	NA	Septic Seal Permit
40	644662.3987	4266865.65	10341	NA	11/8/2001	NA	Septic Seal Permit
41	638686.2741	4259476.769	45276	NA	9/13/2011	NA	Septic Seal Permit
42	645987.9126	4273549.853	26806	NA	8/5/2005	NA	Septic Seal Permit
43	640674.2458	4260622.486	30344	NA	5/15/2006	NA	Septic Seal Permit
44	640863.177	4260781.629	39816	NA	4/8/2009	NA	Septic Seal Permit
45	643811.2342	4273950.774	29131	NA	2/6/2006	NA	Septic Seal Permit
46	643369.3984	4273387.261	39107	NA	12/4/2008	NA	Septic Seal Permit
47	644607.3751	4270794.306	22506	NA	9/9/2004	NA	Septic Seal Permit
48	640915.8103	4259603.688	37454	NA	5/15/2008	NA	Septic Seal Permit
49	639780.3807	4260268.108	43503	NA	10/8/2010	NA	Septic Seal Permit
50	641433.7565	4267980.06	36026	NA	12/5/2007	NA	Septic Seal Permit
51	636980.321	4257692.762	22805	NA	10/19/2004	NA	Septic Seal Permit
52	646340.3765	4269978.914	38759	NA	10/15/2008	NA	Septic Seal Permit
53	642215.075	4269525.094	22806	NA	10/19/2004	NA	Septic Seal Permit
54	638800.6756	4257480.127	41909	NA	1/13/2010	NA	Septic Seal Permit
55	642850.8781	4264299.213	48306	NA	6/7/2013	NA	Septic Seal Permit

OFFICE OF WATER RESOURCES NPDES OUTLETS

OBJECTID	x	y	permit_id	fac_name	issuedate	expiredate	sub_desc
1	645083.1855	4273885.692	WVG640022	Town of Franklin	9/14/2000	7/18/2018	Water Treatment Plant (GP)

SUPERFUND RESOURCE CONSERVATION & RECOVERY ACT FACILITIES

OBJECTID_1	PRIMARY_NA	LOCATION_A	SUPPLEMENT	CITY_NAME	COUNTY_NAM
1	TOWN OF FRANKLIN	PO BOX 483		FRANKLIN	PENDLETON
2	ROCKY PINE FARMS, LLC	DAHMER GAP ROAD		FRANKLIN	PENDLETON
3	SUGAR GROVE ESTATES	UNKNOWN		FRANKLIN	PENDLETON
4	MOATSTOWN BORROW SITE	UNKNOWN		FRANKLIN	PENDLETON
5	BLACKHORN CREEK	UNKNOWN		MOYERS	PENDLETON

APPENDIX B. EARLY WARNING MONITORING SYSTEM FORMS

Select and Attach the Appropriate Form for Your System

Form A - Complete if you currently have an early warning monitoring system for a groundwater source.

Form B - Complete if you currently have an early warning monitoring system installed for a surface water source.

Form C - If you do not currently have an early warning monitoring system installed for a surface water intake or are planning to upgrade or replace your current system, complete this form.

Form D - If you do not currently have an early warning monitoring system installed for a groundwater source or are planning to upgrade or replace your current system, complete this form.

Note: You may need to fill out and attach more than one form to your Protection Plan, depending on your current situation.

Appendix B - Form B

Proposed Ground Monitoring Worksheet

Describe the type of early warning detection equipment that could be installed, including design:
Multi-parameter Universal Controller with the capability of monitoring several different parameters. The controller is mounted on a panel that also serves as a trough. A separate pump is necessary to pump the raw water to and through the trough. The trough is capable of receiving up to 6 different probe sensors that can monitor parameters such as: Oil and gas, pH, temperature, conductivity, DO, turbidity, nitrates, ammonium, or organics. The controller would be programmed to alarm the operators through the existing telemetry when any of the monitored parameters got above a certain point.
Where would the equipment be located?:
The equipment would be mounted, out of the weather, at the control panel near the spring impoundment.
What would the maintenance plan for the monitoring equipment entail?:
Daily checkup of the monitoring equipment. The probe/sensors can be unscrewed from the trough and wiped down as needed. The trough can also be wiped out or flushed as needed.
Describe the proposed sampling plan at the monitoring site:
Water would be drawn directly from the impoundment to the panel/trough with a single tap for a drain line. The controller would be continuously monitoring the water through the trough based on the probes mentioned above. If a parameter would go beyond the acceptable limits, the telemetry would alarm the Operators who in turn could shut down the intake before any contaminated water could reach the plant.
Describe the proposed procedures for data management and analysis:
The data gathered during the continuous monitoring could be added to the existing telemetry (SCADA) system. The telemetry would time stamp the information received and create a trending line graph for each parameter. The graph would be based on the time of sample and level. This would allow the District to see a base line and any changes that occur on a daily basis.

APPENDIX C. COMMUNICATION PLAN TEMPLATE

Franklin, Municipality Of

PWSID: WV3303602

Authorizing Signature: Bruce Minor

Contact Phone Number: (304)358-3889

Contact Email Address: tact12000@yahoo.com

Plan Developed On: May 2024

ACKNOWLEDGMENTS:

This plan was developed by [insert name, title of person completing plan, and who they work for] to meet certain requirements of the Source Water and Assessment Protection Program (SWAPP) and the Wellhead Protection Program (WHPP) for the State of West Virginia, as directed by the federal Safe Drinking Water Act (SDWA) and state laws and regulations.

INTRODUCTION

Legislative Rule 64CSR3 requires public water systems to develop a Communication Plan that documents how public water suppliers, working in concert with state and local emergency response agencies, shall notify state and local health agencies and the public in the event of a spill or contamination event that poses a potential threat to public health and safety. The plan must indicate how the public water supplier will provide updated information, with an initial notification to the public to occur no later than thirty minutes after the supplier becomes aware that the spill, release or potential contamination of the public water system poses a potential threat to public health and safety.

The public water system has responsibility to communicate to the public, as well as to state and local health agencies. This plan is intended to comply with the requirements of Legislative Rule 64CSR3, and other state and federal regulations.

TIERS REPORTING SYSTEM

This water system has elected to use the Tiered Incident / Event Reporting System (TIERS) for communicating with the public, agencies, the media, and other entities in the event of a spill or other incident that may threaten water quality. TIERS provides a multi-level notification framework, which escalates the communicated threat level commensurate with the drinking water system risks associated with a particular contamination incident or event. TIERS also includes a procedural flow chart illustrating key incident response communication functions and how they interface with overall event response / incident management actions. Finally, TIERS identifies the roles and responsibilities for key people involved in risk response, public notification, news media and other communication.

TIERS provides an easy-to-remember five-tiered **A-B-C-D-E** risk-based incident response communication format, as described below. Table 1 provides also associated risk levels.

A = Announcement. The water system is issuing an announcement to the public and public agencies about an incident or event that may pose a threat to water quality. Additional information will be provided as it becomes available. As always, if water system customers notice anything unusual about their water, they should contact the water system.

B = Boil Water Advisory. A boil water advisory has been issued by the water system. Customers may use the water for showering, bathing, and other non-potable uses, but should boil water used for drinking or cooking.

C = Cannot Drink. The water system asks that users not drink or cook with the water at this time. Non-potable uses, such as showering, bathing, cleaning, and outdoor uses are not affected.

D = Do Not Use. An incident or event has occurred affecting nearly all uses of the water. Do not use the water for drinking, cooking, showering, bathing, cleaning, or other tasks where water can come in contact with your skin. Water can be used for flushing commodes and fire protection.

E = Emergency. Water cannot be used for any reason.

Tier	Tier Category	Risk Level	Tier Summary
A	Announcement	Low	The water system is issuing an announcement to the public and public agencies about an incident or event that could pose a threat to public health and safety. Additional information will be provided as it becomes available.
B	Boil Water Advisory	Moderate	Water system users are advised to boil any water to be used for drinking or cooking, due to possible microbial contamination. The system operator will notify users when the boil water advisory is lifted.
C	Cannot Drink	High	System users should not drink or cook with the water until further notice. The water can still be used for showering, bathing, cleaning, and other tasks.
D	Do Not Use	Very High	The water should only be used for flushing commodes and fire protection until further notice. More information on this notice will be provided as soon as it is available.
E	Emergency	Extremely High	The water should not be used for any purpose until further notice. More information on this notice will be provided as soon as it is available.

COMMUNICATION TEAM

The Communication Team for the water system is listed in the table below, along with key roles. In the event of a spill or other incident that may affect water quality, the water system spokesperson will provide initial information, until the team assembles (if necessary) to provide follow-up communication

Water system communication team members, organizations, and roles.

Team Member Name	Organization	Phone	Email
Bruce Minor	Franklin, Municipality Of	(304)358-3889	tact12000@yahoo.com
Mayor Bob Horan	Franklin, Municipality Of	(304)358-7525	townfranklin@gmail.com

In the event of a spill, release, or other incident that may threaten water quality, members of the team who are available will coordinate with the management staff of the local water supplier to:

- Collect information needed to investigate, analyze, and characterize the incident/event
- Provide information to the management staff, so they can decide how to respond
- Assist the management staff in handling event response and communication duties
- Coordinate fully and seamlessly with the management staff to ensure response effectiveness

COMMUNICATION TEAM DUTIES

The communication team will be responsible for working cooperatively with the management staff and state and local emergency response agencies to notify local health agencies and the public of the initial spill or contamination event. The team will also provide updated information related to any contamination or impairment of the source water supply or the system's drinking water supply.

According to Legislative Rule 64CSR3, the initial notification to the public will occur no later than thirty minutes after the public water system becomes aware that the spill, release or potential contamination of the public water system poses a potential threat to public health and safety.

As part of the group implementing the Source Water Protection Plan, team members are expected to be familiar with the plan, including incident/event response and communication tasks. Specifically, team members should:

- Be knowledgeable on elements of the Source Water Protection Plan and Communication Plan
- Attend team meetings to ensure up-to-date knowledge of the system and its functions
- Participate in periodic exercises that “game out” incident response and communication tasks
- Help to educate local officials, the media, and others on source water protection
- Cooperate with water supplier efforts to coordinate incident response communication
- Be prepared to respond to requests for field investigations of reported incidents
- Not speak on behalf of the water supplier unless designated as the system’s spokesperson

The primary spokesperson will be responsible for speaking on behalf of the water system to local agencies, the public, and the news media. The spokesperson should work with the management staff and the team to ensure that all communication is clear, accurate, timely, and consistent. The spokesperson may authorize and/or direct others to issue news releases or other information that has been approved by the system’s management staff. The spokesperson is expected to be on call immediately when an incident or event which may threaten water quality occurs. The spokesperson will perform the following tasks in the event of a spill, release, or other event that threatens water quality:

- Announce which risk level (A, B, C, D, or E) will apply to the public notifications that are issued
- Issue news releases, updates, and other information regarding the incident/event
- Use the news media, email, social media, and other appropriate information venues
- Ensure that news releases are sent to local health agencies and the public
- Respond to questions from the news media and others regarding the incident/event
- Appear at news conferences and interviews to explain incident response, etc.

INCIDENT / EVENT COMMUNICATION PROCEDURE

The flow chart in this section illustrates how the water system will respond when it receives a report that a spill, release, or other contamination event may have occurred. Key elements of the flow chart are described below.

Communication with agencies, the public, and the media during threat incidents

Upon initial notification of the incident/event, system managers and staff will collect information and verify the need for further investigation. Only properly trained personnel will perform onsite investigations if permitted by emergency responders. If further investigation is warranted, and the initial facts support it, the water system spokesperson will issue a public communication statement consistent with the threat level. In addition, water system personnel and partners will be dispatched to conduct reconnaissance, a threat assessment, and a threat characterization, if present. This work may include:

- Verification of the incident/event type (spill, release, etc.)
- Location of incident/event
- Type of material(s) involved in spill, release, etc.
- Quantity of material involved
- Potential of the material to move, migrate, or be transported
- Relevant time factor(s) in the risk assessment (e.g., downstream movement rate)
- Overall level of risk to water system, whether low, moderate, high, or very high
- Development of the initial risk characterization

As the flow chart indicates, several iterative cycles will occur after the initial threat assessment, including communication with local agencies and the public, further investigation of the incident, possible implementation of

the water system's contingency plan, and eventual elimination of the threat and a return to normal operations.

Communication activities during this period will include:

- The initial release (i.e., Announcement, Boil Water Advisory, Cannot Drink, Do Not Use, or Emergency)
 - Sent to local health agencies, the public, and the news media within 30 minutes
- Notification of the local water system's source water protection and communication teams
 - If warranted by initial findings regarding the spill, release, or incident
- Notification of the WV Bureau of Public Health
 - As required
- Periodic information updates, as incident response information is received
- Updates to the applicable A-B-C-D-E advisory tier, as necessary

If time permits and the need arises, after the threat level is reduced, and operations return to normal, the water system staff, the communication and source water protection teams, and their partners may conduct a post-event review and assessment. The purpose of the review is to examine the response to the incident, relevant communication activities, and overall outcomes. Plans and procedures may be updated, altered, or adapted based on lessons learned through this process.

EMERGENCY SHORT FORMS

Emergency Communication Information

	Name	Phone	Email	
Designated spokesperson:	Bruce Minor	(304)358-3889	tact12000@yahoo.com	
Alternate spokesperson:	Mayor Bob Horan	(304)358-7525	townfranklin@gmail.com	
Designated location to disseminate information to media:	Town Hall 305 N High Street Franklin, WV 26807			
Method of Contact:	Radio Word of Mouth 911			
Media Contacts:	Name	Title	Phone Number	Email
	WELD	Radio Station	(304)583-6062	

Emergency Service Contacts

	Name	Emergency Phone	Alternative Phone	Email
Police	Pendleton Co Sheriff Dept.	(911)___-___		
Fire	Franklin VFD	(911)___-___		
Ambulance	Franklin Rescue Squad	(911)___-___		
Hazmat	Franklin VFD	(911)___-___		
Other				
Other				
Other				

Sensitive Populations

Other Communities that are served by the Utility:	N/A				
Major User/Sensitive Population Notification	Name	Emergency Phone	Alternative Phone	Email	
	Pendleton Co PSD Franklin North	(304)358-3027			
	Franklin Elementary	(304)358-2322			
	Pendleton Middle/High School	(304)358-2573			
	Group Home	(304)358-2407			
	Fox's Motel	(304)358-2118			
	Star Motel	(304)358-3580			
	Dr. Office	(304)358-2530			
EED District Office Contact	Name	Phone	Email		
	Justin Jordan	(304)725-9453	justin.e.jordan@wv.gov		
OEHS Readiness Coordinator	Lee Orr	(304)356-4290			
Downstream Water System Contacts	Water System Name	Contact Name	Emergency Phone	Alternate Phone	Email
	Pendleton Co PSD - Upper Tract	Stephen Lee Roberson	(304)358-3027		
Are you planning on implementing the TIER Communications plan?:			Yes		

Emergency Service Key Staff Members

	Name	Title	Phone	Email
Key Staff Responsible for Coordinating Emergency Response Procedures:	Larry Hoover	Chief Operator	(304)358-8011	townfranklin@gmail.com
Staff Responsible for Keeping Confidential PSSC Information and Releasing to Emergency Responders.	Frank Wehrle	Business Manager	(304)358-7525	townfranklin@gmail.com

Emergency Response Information

List Laboratories available to perform sample analysis in case of emergency.	Name	Phone
	REIC	(304)241-5861
	WVDHHR	(304)725-9453
	Department of Agriculture	(304)558-3550
Has utility developed a detailed Emergency Response Plan in accordance with the Public Health Security Bioterrorism preparedness and Response Plan Act of 2002 that covers the following areas?:		Yes
When was the emergency response plan developed or last updated?:		

EMERGENCY CONTACT INFORMATION

State Emergency Spill Notification

1-800-642-3074

Office of Emergency Services<http://www.wvdhsem.gov/>

Charleston, WV- (304) 558-5380

WV Bureau for Public Health Office of Environmental Health Services (OEHS)www.wvdhhr.org/oehs**Readiness Coordinator - Lee Orr**

Phone: 304-356-4290

Cell: 304-550-5607

E-mail: Lee.E.Orr@wv.gov**Environmental Engineering Division Staff**

Charleston, Central Office (304) 558-2981

Beckley, District 1 (304) 256-6666

St. Albans, District 2 (304) 722-0611

Kearneysville, District 4 (304) 725-9453

Wheeling, District 5 (304) 238-1145

Fairmont, District 6 (304) 368-2530

National Response Center - Chemical, Oil, & Chemical/Biological Terrorism

1-800-424-8802

WV State Fire Marshal's Office

1-800-233-3473

West Virginia State Police

1-304-746-2100

WV Watch – Report Suspicious Activity

1-866-989-2824

DEP Distance Calculator<http://tagis.dep.wv.gov/pswicheck/>

PRESS RELEASE ATTACHMENTS

TIERS Levels A, B, C, D, and E

**UTILITY ISSUED NOTICE – LEVEL A
PUBLIC WATER SYSTEM ANNOUNCEMENT
A WATER SYSTEM INVESTIGATION IS UNDERWAY**

On _____ at ____:____ AM/PM, the _____ Water System began investigating an incident that may affect local water quality.

The incident involves the following situation at this location:

There are no restrictions on water use at this time. As always, if water system customers notice anything unusual about their water – such as abnormal odors, colors, sheen, etc. – they should contact the water system at _____.

At this time there is no need for concern if you have consumed or used the water.

Regular updates will be provided about this Announcement as water system staff continue their investigation. Again, there are no restrictions on water use at this time.

State Water System ID# _____ Date Distributed: _____

**UTILITY ISSUED NOTICE – LEVEL B
BOIL WATER ADVISORY
A BOIL WATER ADVISORY IS IN EFFECT**

On _____ at ____:____ am/pm, a water problem occurred causing contamination of your water. The areas that are affected are as follows:

Entire Water System or Other: _____

CONDITIONS INDICATE THERE IS A HIGH PROBABILITY THAT YOUR WATER IS CONTAMINATED. TESTING HAS NOT OCCURRED TO CONFIRM OR DENY THE PRESENCE OF CONTAMINATION IN YOUR WATER.

What should I do?

- **DO NOT DRINK THE WATER WITHOUT BOILING IT FIRST.** Bring all water to a boil, let it boil for one minute, and let it cool before using, or use bottled water. Boiled or bottled water should be used for drinking, making ice, brushing teeth, washing dishes, bathing, and food preparation until further notice. Boiling kills bacteria and other organisms in the water.

What happened?

- The problem is related to _____

What is being done?

- The water system is taking the following action: _____

What should a customer do if they have consumed or used the water?

- _____

We will inform you when you no longer need to boil your water. We anticipate resolving the problem within _____ hours/days. For more information, please contact _____ at _____ or _____ at _____.

General guidelines on ways to lessen the health risk are available from the EPA Safe Drinking Water Hotline at 1 (800) 426-4791.

Please share this information others who use this water, especially those who may not have received this notice directly (for example, people in apartments, nursing homes, schools, and businesses). You can do this by posting this notice in a public place or distributing copies by hand or mail.

This notice was distributed by _____

State Water System ID# _____ Date Distributed: _____

UTILITY ISSUED NOTICE – LEVEL C
“CANNOT DRINK” WATER NOTIFICATION
A LEVEL C WATER ADVISORY IS IN EFFECT

On _____ at ____:____ am/pm, a water problem occurred causing contamination of your water. The areas that are affected are as follows:

Entire Water System or Other: _____

CONDITIONS INDICATE THERE IS A HIGH PROBABILITY THAT YOUR WATER IS CONTAMINATED. TESTING HAS NOT OCCURRED TO CONFIRM OR DENY THE PRESENCE OF CONTAMINATION IN YOUR WATER.

What should I do?

- **DO NOT DRINK THE WATER.** You can't drink the water, but you can use it for showering, bathing, toilet-flushing, and other non-potable purposes.
- **BOILING WILL NOT PURIFY THE WATER.** Do not drink the water, even if it is boiled.

What happened?

- The problem is related to _____

What is being done?

- The water system is taking the following action: _____

What should a customer do if they have consumed or used the water?

- _____

We will inform you when the water is safe to drink. We anticipate resolving the problem within _____ hours/days. For more information – or to report unusual water conditions such as abnormal odors, colors, sheen, etc. – please contact _____ at _____ or _____ at _____.

General guidelines on ways to lessen the health risk are available from the EPA Safe Drinking Water Hotline at 1 (800) 426-4791.

Please share this information others who use this water, especially those who may not have received this notice directly (for example, people in apartments, nursing homes, schools, and businesses). You can do this by posting this notice in a public place or distributing copies by hand or mail.

This notice was distributed by _____

State Water System ID# _____ Date Distributed: _____

UTILITY ISSUED NOTICE – LEVEL D
“DO NOT USE” WATER NOTIFICATION
A LEVEL D WATER ADVISORY IS IN EFFECT

On _____ at ____:____ am/pm, a water problem occurred causing contamination of your water. The areas that are affected are as follows:

Entire Water System or Other: _____

CONDITIONS INDICATE THERE IS A HIGH PROBABILITY THAT YOUR WATER IS CONTAMINATED. TESTING HAS NOT OCCURRED TO CONFIRM OR DENY THE PRESENCE OF CONTAMINATION IN YOUR WATER.

What should I do?

- **DO NOT DRINK THE WATER.** The water is contaminated.
- **DO NOT SHOWER OR BATHE IN THE WATER.** You can't use the water for drinking, showering, or bathing. It can be used for toilet flushing and firefighting.
- **BOILING WILL NOT PURIFY THE WATER.** Do not use the water, even if it is boiled. The type of contamination suspected is not removed by boiling.

What happened?

- The problem is related to _____

What is being done?

- The water system is taking the following action: _____

What should a customer do if they have consumed or used the water?

- _____

We will inform you when the water is safe to drink. We anticipate resolving the problem within _____ hours/days. For more information – or to report unusual water conditions such as abnormal odors, colors, sheen, etc. – please contact _____ at _____ or _____ at _____.

Please share this information others who use this water, especially those who may not have received this notice directly (for example, people in apartments, nursing homes, schools, and businesses). You can do this by posting this notice in a public place or distributing copies by hand or mail.

This notice was distributed by _____

State Water System ID# _____ Date Distributed: _____

UTILITY ISSUED NOTICE – LEVEL E
EMERGENCY WATER NOTIFICATION
A LEVEL E WATER ADVISORY IS IN EFFECT

On _____ at ____:____ am/pm, a water problem occurred causing contamination of your water. The areas that are affected are as follows:

Entire Water System or Other: _____

CONDITIONS INDICATE THERE IS A HIGH PROBABILITY THAT YOUR WATER IS CONTAMINATED. TESTING HAS NOT OCCURRED TO CONFIRM OR DENY THE PRESENCE OF CONTAMINATION IN YOUR WATER.

What should I do?

- **DO NOT DRINK THE WATER.** The water is contaminated.
- **DO NOT USE THE WATER FOR ANY PURPOSE!** You can't use the water for drinking, showering, or bathing, or any other use – not even for toilet flushing.
- **BOILING WILL NOT PURIFY THE WATER.** Do not use the water, even if it is boiled. The type of contamination suspected is not removed by boiling.

What happened?

- The problem is related to _____

What is being done?

- The water system is taking the following action: _____

What should a customer do if they have consumed or used the water?

- _____

We will inform you when the water is safe to drink. We anticipate resolving the problem within _____ hours/days. For more information – or to report unusual water conditions such as abnormal odors, colors, sheen, etc. – please contact _____ at _____ or _____ at _____.

Please share this information others who use this water, especially those who may not have received this notice directly (for example, people in apartments, nursing homes, schools, and businesses). You can do this by posting this notice in a public place or distributing copies by hand or mail.

This notice was distributed by _____

State Water System ID# _____ Date Distributed: _____

APPENDIX D. SINGLE SOURCE FEASIBILITY

Water Source Alternative:

Back up intake	
Name of Alternative:	Thorn Creek
Brief Description of the Alternative:	Thorn Creek
Feasible?:	Yes
Provide Cost Estimate:	\$725,000
Would this alternative supply 100% of your needs?:	No
Economic Criteria - Operation and Maintenance Costs:	2
Economic Criteria - Capital Cost:	1
Technical Criteria - Permitting:	3
Technical Criteria - Flexibility:	3
Technical Criteria - Resilience:	3
Technical Criteria - Institutional Requirements:	3
Environmental Criteria - Environmental Impacts:	3
Environmental Criteria - Aesthetic Impacts:	3
Environmental Criteria - Stakeholder Issues:	0
Final Score:	70.67%
Treated water storage	
Name of Alternative:	Treated Water Storage
Brief Description of the Alternative:	Treated Water Storage
Feasible?:	Yes
Provide Cost Estimate:	\$450,000
Would this alternative supply 100% of your needs?:	No
Economic Criteria - Operation and Maintenance Costs:	2
Economic Criteria - Capital Cost:	2
Technical Criteria - Permitting:	3
Technical Criteria - Flexibility:	3
Technical Criteria - Resilience:	3
Technical Criteria - Institutional Requirements:	3
Environmental Criteria - Environmental Impacts:	3
Environmental Criteria - Aesthetic Impacts:	3
Environmental Criteria - Stakeholder Issues:	0
Final Score:	80.00%
Tank for Raw Water Storage	
Name of Alternative:	Raw Water Storage

Brief Description of the Alternative:	Raw Water Storage
Feasible?:	Yes
Provide Cost Estimate:	\$732,250
Would this alternative supply 100% of your needs?:	No
Economic Criteria - Operation and Maintenance Costs:	2
Economic Criteria - Capital Cost:	1
Technical Criteria - Permitting:	3
Technical Criteria - Flexibility:	3
Technical Criteria - Resilience:	3
Technical Criteria - Institutional Requirements:	3
Environmental Criteria - Environmental Impacts:	0
Environmental Criteria - Aesthetic Impacts:	3
Environmental Criteria - Stakeholder Issues:	0
Final Score:	64.56%

Feasibility Study Narrative

Appendix E. Feasibility Study Narrative

Backup Intake – The Town of Franklin currently has a backup intake in place along Thorn Run. The intake is a vacuum primed intake that is inactive. According to the operators, the intake pump was upgraded when the plant modifications were completed roughly 7-8 years ago. However, the intake structure itself is in need of repair. For costing purposes, a lump sum amount of \$500,000 construction costs will be used to upgrade the intake to be self priming. This would include the intake and verification of the modifications at the newer pumps.

Interconnection – The Town of Franklin provides water to its customers in the Town along with selling water to the Pendleton County Public Service District. There is no other utility that would be available to make an interconnection.

Treated Water Storage – The Town of Franklin has 793,000 gallons of treated water storage capacity. This equates to roughly 1.74 days at maximum production and 3.2 days at average production. Peak production of over 400,000 gallons per day only occurred twice throughout the sample year. The next highest daily production was 351,000 gallons which the existing system provides roughly 2.25 days of storage. The Town currently operates with over 55% water loss. Adding treated water storage capacity could potentially create water quality issues if the Town were able to find any major contributors to the water loss. However, several of the existing Treated Water Storage Tanks are in need of repair/repaint. These include the Hanover, Morton, Anderson, and Entry tanks. A lump sum repaint cost of \$450,000 is used in the matrix.

Raw Water Storage – The Town of Franklin has 105,000 gallons of raw water storage capacity in the sediment basins. Additional storage capacity would include a tank near the Water Treatment Plant (WTP) that would receive the gravity feed or pumping from the backup intake. The tank would be sized at roughly two (2) days average production or 500,000 gallons. Costing for the raw water tank would include the necessary piping modifications and control valves.

Other - The Town mentioned a potential secondary source of water located near the DOH facility in Franklin. After conversation with the operator, this is not a feasible connection based on the material needed to dig through to get from the location to the WTP.

Matrix Document

Feasibility Matrix		Town of Franklin	PWSID: 3303602	Mar-16	Matrix Completed By:			Cerrone Associates, Inc.		
Criteria	Question	Backup Intake	Feasibility	Interconnect	Treated Water Storage	Feasibility	Raw Water Storage	Feasibility	Other (Name of Alternative)	Feasibility
Economic Criteria	What is the total current budget year cost to operate and maintain the PWSU (current budget year)?	\$229,930.00		\$229,930.00	\$229,930.00		\$229,930.00		\$229,930.00	
	Describe the major O&M cost requirements for the alternative?	Pump operation and renewal and replacement costs	2	N/A	Repair cost over 25 years	2	Tank Renewal and Replacement	2	[Describe]	0
	What is the incremental cost (\$/gal) to operate and maintain the alternative?	\$14,546.00	2	\$0.00	\$18,000.00	2	\$6,000.00	2	\$0.00	0
	Cost comparison of the incremental O&M cost to the current budgeted costs (%)	6.33%	2	0.00%	7.83%	2	3.48%	2	0.00%	0
O and M Feasibility Score	Describe the capital improvements required to implement the alternative.	Lump sum cost to overhaul existing backup intake along Horn Creek	2.0	No interconnection available	Four existing tanks repainted	2.0	New Raw Water Tank, piping modifications and Controls	2.0	[Describe]	0.0
	What is the total capital cost for the alternative?	\$725,000.00	1	\$0.00	\$450,000.00	2	\$742,250.00	1	\$0.00	0
	What is the annualized capital cost to implement the alternative, including land and easement costs, convenience tap fees, etc. (\$/gal)	\$34,282.00	1	\$0.00	\$21,254.00	2	\$34,585.00	1	\$0.00	0
	Cost comparison of the alternatives annualized capital cost to the current budgeted costs (%)	14.89%	1	0.00%	9.24%	2	15.04%	1	0.00%	0
Capital Cost-Feasibility Score	Technical Criteria		1.0			2.0		1.0		0.0
	Provide a list of the expected permits required and the permitting agencies involved in their approval.	Health permit for existing intake modifications - WRBP	3	N/A	N/A	3	Health permit for existing intake modifications - WRBP	3	[List and Describe]	0
	What is the timeframe for permit approval for each permit?	Health permit - 30 days	3	N/A	N/A	3	Health permit - 30 days	3	[List the timeframe for approval for each permit listed above]	0
	Describe the major requirements in obtaining the permits (environmental impact studies, public hearings, etc.)	Detailed plans and specifications	3	N/A	N/A	3	Detailed plans and specifications	3	[Describe all major requirements for approval for the listed permits]	0
Permitting	What is the likelihood of successfully obtaining the permit?	Very Likely	3	N/A	N/A	3	Very Likely	3	[Describe]	0
	Does the implementation of the alternative require regulatory exceptions or variances?	None Expected	3	N/A	N/A	3	None Expected	3	[Yes/No/Describe]	0
	Permitting-Feasibility Score		3.0			3.0		3.0		0.0
	Will the alternative be needed on a regular basis or only used intermittently?	Intermittently	2	N/A	N/A	Regular	3	Regular	[Describe]	0
Flexibility	How will implementing the alternative affect the PWSU's current meeting Safe Drinking Water Act regulations? (ex. in the case of storage, will the alternative increase the likelihood of disinfection byproducts?)	No Change	3	N/A	No change	3	None Expected	3	[Describe]	0
	Flexibility-Feasibility Score		2.5			3.0		3.0		0.0
	Will the alternative provide any advantages or disadvantages to meeting seasonal changes in demand?	Provides a reliable secondary source	3	N/A	N/A	No change	3	None Expected	[Yes/No]	0
	How resistant will the alternative be to extreme weather conditions such as drought and flooding?	Potential issues with extreme drought	2	N/A	N/A	No change	3	Provides additional storage	[Yes/No]	0

Criteria	Question	Backup Intake	Feasibility	Interconnect	Feasibility	Treated Water Storage	Feasibility	Raw Water Storage	Feasibility	Other (Name of Alternative)	Feasibility
	Will the alternative be expandable to meet the growing needs of the service area?	No growth expected	3	N/A	0	No change	3	No growth expected	3	[Describe]	0
	Resilience-Feasibility Score		2.7		0.0		3.0		3.0		0.0
	Identify any agreements or other legal instruments with government agencies (like the Department of PWSU) required to implement this alternative.	None Expected	3	N/A	0	N/A	3	None Expected	3	[Describe]	0
Institutional Requirements	Are any development/planning restrictions in place that can act as a barrier to the implementation of the alternative.	None Expected	3	N/A	0	N/A	3	None Expected	3	[Yes/No]	0
	Identify potential land acquisitions and easements requirements.	None Expected	3	N/A	0	N/A	3	Possible tank site	2	[Describe]	0
	Institutional Requirements-Feasibility Score		3.0		0.0		3.0		2.7		0.0
	Environmental Criteria										
Environmental Impacts	Identify any environmentally protected areas or habitats that might be impacted by the alternative.	None Expected	3	N/A	0	N/A	3	None Expected	0	[Describe]	0
	Environmental Impacts-Feasibility Score		3.0		0.0		3.0		0.0		0.0
Aesthetic Impacts	Identify any visual or noise issues caused by the alternative that may affect local land uses?	None Expected	3	N/A	0	Improve existing tank condition	3	Tank	2	[Describe]	0
	Identify any mitigation measures that will be required to address aesthetic impacts?	None Expected	3	N/A	0	N/A	3	None Expected	3	[Describe]	0
	Aesthetic Impacts-Feasibility Score		3.0		0.0		3.0		2.5		0.0
Stakeholder Issues	Identify the potential stakeholders affected by the alternative.	[Describe]	0	[Describe]	0	[Describe]	0	[Describe]	0	[Describe]	0
	Identify the potential issues with stakeholders for and against the alternative.	[Describe]	0	[Describe]	0	[Describe]	0	[Describe]	0	[Describe]	0
	Will stakeholder concerns represent a significant barrier to implementation (or assistance) of the alternative?	[Yes/No]	0	[Yes/No]	0	[Yes/No]	0	[Yes/No]	0	[Yes/No]	0
	Stakeholder Issues-Feasibility Score		0.0		0.0		0.0		0.0		0.0
	Comments	Comments		Comments		Comments		Comments		Comments	

Instructions: Using the expanded instructions in the "FEASIBILITY STUDY GUIDANCE DOCUMENT", complete the white and gray input cells. Rank each criteria based on the evidence provided and best professional judgement. Rank the criteria 0-3, assuming 0=not feasible and 3=most feasible. The password to edit fillable cells is "swap".

Scoring:
 0 – Not feasible. Criterion cannot be met by this alternative and removes the alternative from further consideration.
 1 – Feasible but difficult. Criterion represents a significant barrier to successful implementation but does not eliminate it from consideration.
 2 – Feasible. Criterion can be met by the alternative.
 3 – Very Feasible. Criterion can be easily met by the alternative.

Feasibility Matrix Alternative Strategy Description	Town of Franklin				PWSID: 3303602				Date: 42430				Completed By: Carrone Associates, Inc.						
	Economic Criteria				Technical Criteria				Environmental Criteria				Final Score	Total Capital Cost	Comments				
	Operation and Maintenance Costs	Capital Costs	Total	Total %	Permitting	Flexibility	Resilience	Institutional Requirements	Total	Total %	Weighted Total	Environmental Impacts				Stakeholder Issues	Total	Total %	Weighted Total
Backup Intake	2.0	1.0	3.0	50.0%	20.0%	3.0	2.5	2.7	3.0	3.0	3.0	3.0	0.0	6.0	66.7%	13.3%	70.6%	\$725,000.0	Comments
Interconnect	0.0	0.0	0.0	0.0%	0.0%	0.0	0.0	0.0	0.0	0.0	0.0	0.0	0.0	0.0	0.0%	0.0%	0.0%	\$0.0	Comments
Treated water storage	2.0	2.0	4.0	66.7%	26.7%	3.0	3.0	3.0	3.0	3.0	3.0	3.0	0.0	6.0	66.7%	13.3%	80.0%	\$450,000.0	Comments
Raw Water Storage	2.0	1.0	3.0	50.0%	20.0%	3.0	3.0	3.0	2.7	11.7	97.2%	38.9%	0.0	2.5	27.8%	5.6%	64.4%	\$732,250.0	Comments
Other (Name of Alternative)	0.0	0.0	0.0	0.0%	0.0%	0.0	0.0	0.0	0.0	0.0	0.0	0.0	0.0	0.0	0.0%	0.0%	0.0%	\$0.0	Comments

Scoring:

- 0 – Not feasible. Criterion cannot be met by this alternative and removes the alternative from further consideration.
- 1 – Feasible but difficult. Criterion represents a significant barrier to successful implementation but does not eliminate it from consideration.
- 2 – Feasible. Criterion can be met by the alternative.
- 3 – Very Feasible. Criterion can be easily met by the alternative

APPENDIX E. SUPPORTING DOCUMENTATION

